

For Research Use Only

# RPL7A Recombinant monoclonal antibody, PBS Only

Catalog Number:86270-3-PBS



## Basic Information

<b>Catalog Number:</b> 86270-3-PBS	<b>GenBank Accession Number:</b> BC005128	<b>Purification Method:</b> Protein A purification
<b>Size:</b> 100ug , Concentration: 1 mg/ml by Nanodrop;	<b>GeneID (NCBI):</b> 6130	<b>CloneNo.:</b> 250886D4
<b>Source:</b> Rabbit	<b>UNIPROT ID:</b> P62424	
<b>Isotype:</b> IgG	<b>Full Name:</b> ribosomal protein L7a	
<b>Immunogen Catalog Number:</b> AG7543	<b>Calculated MW:</b> 266 aa, 30 kDa	

## Applications

**Tested Applications:**  
WB, IF/ICC, Indirect ELISA

**Species Specificity:**  
human, mouse, rat

## Background Information

Ribosomal proteins are a major component of ribosomes, which catalyze protein synthesis. RPL7a, which is a component of the 60S large ribosomal subunit, has additional functions involved in cell growth and differentiation that occur via interaction with human thyroid hormone receptor (THR) and retinoic acid receptor (RAR) and in turn inhibit the activities of the two nuclear hormone receptors [PMID:21505254].

## Storage

**Storage:**  
Store at -80°C.  
**Storage Buffer:**  
PBS only, pH7.3

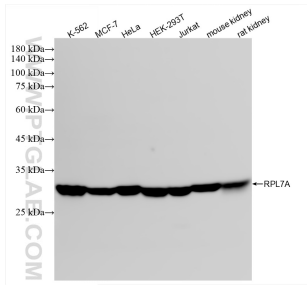
For technical support and original validation data for this product please contact:

T: 1 (888) 4PTGLAB (1-888-478-4522) (toll free in USA), or 1(312) 455-8498 (outside USA)

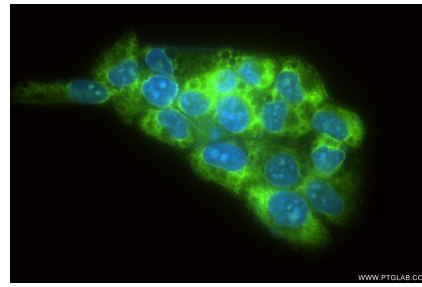
E: [proteintech@ptglab.com](mailto:proteintech@ptglab.com)  
W: [ptglab.com](http://ptglab.com)

**This product is exclusively available under Proteintech Group brand and is not available to purchase from any other manufacturer.**

## Selected Validation Data



Various lysates were subjected to SDS PAGE followed by western blot with 86270-3-RR (RPL7A antibody) at dilution of 1:10000 incubated at room temperature for 1.5 hours. This data was developed using the same antibody clone with 86270-3-PBS in a different storage buffer formulation.



Immunofluorescent analysis of (-20°C Methanol) fixed HeLa cells using RPL7A antibody (86270-3-RR, Clone: 250886D4) at dilution of 1:400 and CoraLite® 488-Conjugated Goat Anti-Rabbit IgG(H+L) (SA00013-2). This data was developed using the same antibody clone with 86270-3-PBS in a different storage buffer formulation.