

For Research Use Only

RPL7A Recombinant antibody

Catalog Number: 86270-4-RR



Basic Information

Catalog Number:

86270-4-RR

Size:

100ul, Concentration: 1000 µg/ml by Nanodrop;

Source:

Rabbit

Isotype:

IgG

Immunogen Catalog Number:

AG7543

GenBank Accession Number:

BC005128

GeneID (NCBI):

6130

UNIPROT ID:

P62424

Full Name:

ribosomal protein L7a

Calculated MW:

266 aa, 30 kDa

Observed MW:

32 kDa

Purification Method:

Protein A purification

CloneNo.:

250886G9

Recommended Dilutions:

WB: 1:5000-1:50000

IF/ICC: 1:200-1:800

Applications

Tested Applications:

WB, IF/ICC, ELISA

Species Specificity:

human, mouse, rat

Positive Controls:

WB : HeLa cells, HEK-293T cells, Jurkat cells, K-562 cells, RAW 264.7 cells, mouse kidney tissue, rat kidney tissue

IF/ICC : HepG2 cells,

Background Information

Ribosomal proteins are a major component of ribosomes, which catalyze protein synthesis. RPL7a, which is a component of the 60S large ribosomal subunit, has additional functions involved in cell growth and differentiation that occur via interaction with human thyroid hormone receptor (THR) and retinoic acid receptor (RAR) and in turn inhibit the activities of the two nuclear hormone receptors [PMID:21505254].

Storage

Storage:

Store at -20°C. Stable for one year after shipment.

Storage Buffer:

PBS with 0.02% sodium azide and 50% glycerol, pH7.3

Aliquoting is unnecessary for -20°C storage

*** 20ul sizes contain 0.1% BSA

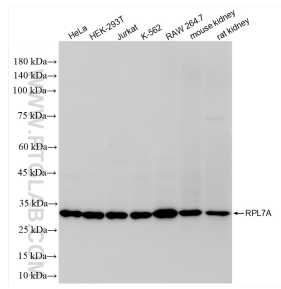
For technical support and original validation data for this product please contact:

T: 1 (888) 4PTGLAB (1-888-478-4522) (toll free in USA), or 1(312) 455-8498 (outside USA)

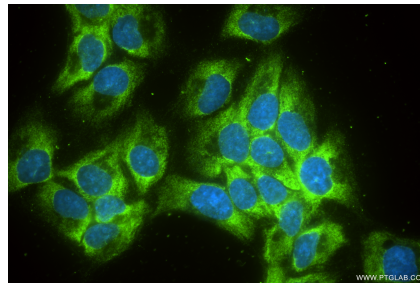
E: proteintech@ptglab.com
W: ptglab.com

This product is exclusively available under Proteintech Group brand and is not available to purchase from any other manufacturer.

Selected Validation Data



Various lysates were subjected to SDS PAGE followed by western blot with 86270-4-RR (RPL7A antibody) at dilution of 1:10000 incubated at room temperature for 1.5 hours.



Immunofluorescent analysis of (-20°C Ethanol) fixed HepG2 cells using RPL7A antibody (86270-4-RR, Clone: 250886G9) at dilution of 1:400 and CoraLite® 488-Conjugated Goat Anti-Rabbit IgG(H+L) (SA00013-2).