

For Research Use Only

HSP60 Recombinant monoclonal antibody

Catalog Number: 86275-1-RR

Featured Product



Basic Information

Catalog Number:

86275-1-RR

Size:

100ul, Concentration: 1000 µg/ml by Nanodrop;

Source:

Rabbit

Isotype:

IgG

Immunogen Catalog Number:

AG7401

GenBank Accession Number:

BC003030

GeneID (NCBI):

3329

UNIPROT ID:

P10809

Full Name:

heat shock 60kDa protein 1 (chaperonin)

Calculated MW:

61 kDa

Observed MW:

60 kDa

Purification Method:

Protein A purification

CloneNo.:

250248D1

Recommended Dilutions:

WB: 1:2000-1:10000

IF/ICC: 1:400-1:1600

Applications

Tested Applications:

WB, IF/ICC, ELISA

Species Specificity:

human

Positive Controls:

WB : HeLa cells, HEK-293 cells, Jurkat cells, MCF-7 cells

IF/ICC : HeLa cells,

Background Information

HSPD1, also known as HSP60, belongs to the chaperonin family and acts as a chaperone to enhance cell survival under physiological stresses. Hsp60 has been shown to be connected with many aspects of cell functions such as protein folding and assembling of polypeptide chains in mitochondria. Recently it has been reported that HSP60 is associated with apoptosis or inhibition of cancer cell growth. (21822415)

Storage

Storage:

Store at -20°C. Stable for one year after shipment.

Storage Buffer:

PBS with 0.02% sodium azide and 50% glycerol, pH7.3

Aliquoting is unnecessary for -20°C storage

*** 20ul sizes contain 0.1% BSA

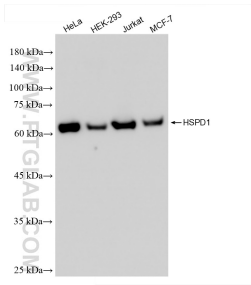
For technical support and original validation data for this product please contact:

T: 1 (888) 4PTGLAB (1-888-478-4522) (toll free in USA), or 1(312) 455-8498 (outside USA)

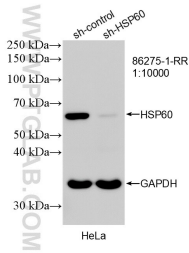
E: proteintech@ptglab.com
W: ptglab.com

This product is exclusively available under Proteintech Group brand and is not available to purchase from any other manufacturer.

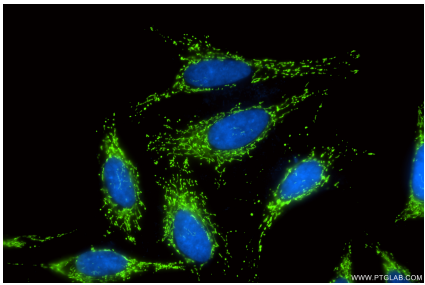
Selected Validation Data



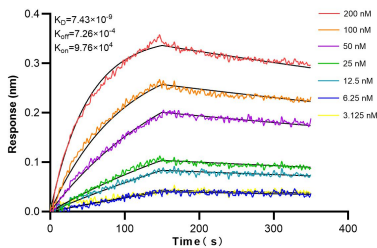
Various lysates were subjected to SDS PAGE followed by western blot with 86275-1-RR (HSP60 antibody) at dilution of 1:5000 incubated at room temperature for 1.5 hours.



WB result of HSP60 antibody (86275-1-RR; 1:10000; incubated at room temperature for 1.5 hours) with sh-Control and sh-HSP60 transfected HeLa cells.



Immunofluorescent analysis of (-20°C Methanol) fixed HeLa cells using HSP60 antibody (86275-1-RR, Clone: 250248D1) at dilution of 1:800 and CoraLite®488-Conjugated Goat Anti-Rabbit IgG(H+L) (SA00013-2).



Biolayer interferometry (BLI) kinetic assays of 86275-1-RR against Human HSPD1 were performed. The affinity constant is 7.43 nM.