

For Research Use Only

# Cytokeratin 39 Recombinant monoclonal antibody, PBS Only

Catalog Number: 86277-2-PBS



## Basic Information

Catalog Number:

86277-2-PBS

Size:

100ug, Concentration: 1 mg/ml by Nanodrop;

Source:

Rabbit

Isotype:

IgG

GenBank Accession Number:

BC157887

GeneID (NCBI):

390792

UNIPROT ID:

Q6A163

Full Name:

keratin 39

Observed MW:

45 kDa

Purification Method:

Protein A purification

CloneNo.:

250891F5

## Applications

Tested Applications:

WB, IHC, IF/ICC, IF-P, Indirect ELISA

Species Specificity:

human, mouse, rat

## Background Information

Cytokeratin 39 (CK-39) is a member of the cytokeratin family, a group of intermediate filament proteins primarily expressed in epithelial cells. Cytokeratins are classified into Type I (acidic) and Type II (basic) subfamilies, which pair to form heteropolymers essential for maintaining cellular structural integrity, mechanical stability, and stress resistance. CK-39 is predominantly expressed in stratified and glandular epithelia, such as those found in the prostate, bladder, and respiratory tract. Its expression pattern may vary depending on tissue differentiation states.

## Storage

Storage:

Store at -80°C.

Storage Buffer:

PBS only, pH7.3

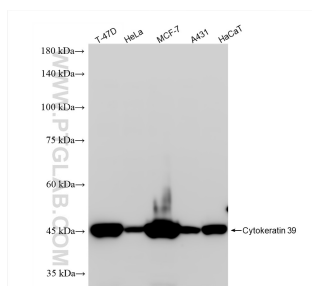
For technical support and original validation data for this product please contact:

T: 1 (888) 4PTGLAB (1-888-478-4522) (toll free in USA), or 1(312) 455-8498 (outside USA)

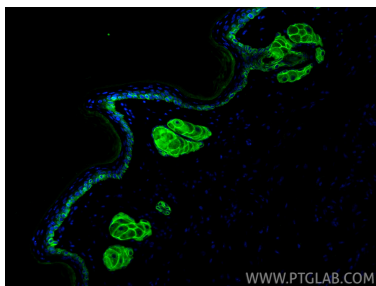
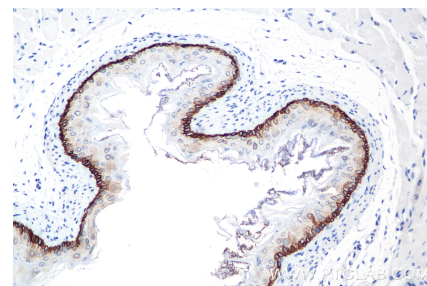
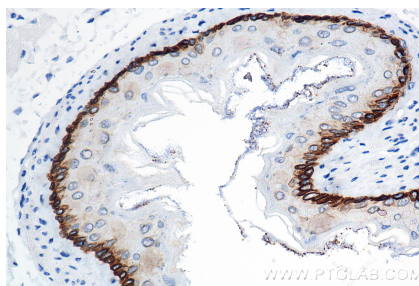
E: [proteintech@ptglab.com](mailto:proteintech@ptglab.com)  
W: [ptglab.com](http://ptglab.com)

This product is exclusively available under Proteintech Group brand and is not available to purchase from any other manufacturer.

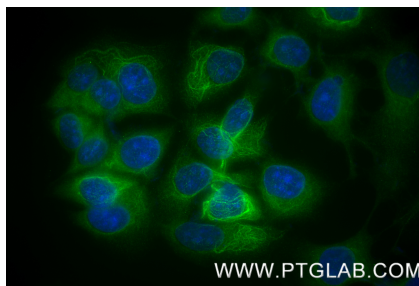
## Selected Validation Data



Various lysates were subjected to SDS PAGE followed by western blot with 86277-2-RR (KRT39 antibody) at dilution of 1:5000 incubated at room temperature for 1.5 hours. This data was developed using the same antibody clone with 86277-2-PBS in a different storage buffer formulation.



Immunofluorescent analysis of (4% PFA) fixed paraffin-embedded mouse skin tissue using Cytokeratin 39 antibody (86277-2-RR, Clone: 250891F5) at dilution of 1:200 and CoraLite®488-Conjugated Goat Anti-Rabbit IgG(H+L) (SA00013-2). Heat mediated antigen retrieval with Tris-EDTA buffer (pH 9.0). This data was developed using the same antibody clone with 86277-2-PBS in a different storage buffer formulation.



Immunofluorescent analysis of (-20°C Methanol) fixed MCF-7 cells using Cytokeratin 39 antibody (86277-2-RR, Clone: 250891F5) at dilution of 1:200 and CoraLite®488-Conjugated Goat Anti-Rabbit IgG(H+L) (SA00013-2). This data was developed using the same antibody clone with 86277-2-PBS in a different storage buffer formulation.