

For Research Use Only

# Cytokeratin 39 Recombinant monoclonal antibody

Catalog Number: 86277-2-RR



## Basic Information

<b>Catalog Number:</b> 86277-2-RR	<b>GenBank Accession Number:</b> BC157887	<b>Purification Method:</b> Protein A purification
<b>Size:</b> 100ul , Concentration: 1000 µg/ml by Nanodrop;	<b>GeneID (NCBI):</b> 390792	<b>CloneNo.:</b> 250891F5
<b>Source:</b> Rabbit	<b>UNIPROT ID:</b> Q6A163	<b>Recommended Dilutions:</b> WB: 1:2000-1:10000 IHC: 1:1000-1:4000 IF-P: 1:50-1:500 IF/ICC: 1:50-1:500
<b>Isotype:</b> IgG	<b>Full Name:</b> keratin 39	
	<b>Observed MW:</b> 45 kDa	

## Applications

**Tested Applications:**  
WB, IHC, IF/ICC, IF-P, ELISA

**Species Specificity:**  
human, mouse, rat

**Note-IHC:** suggested antigen retrieval with **TE buffer pH 9.0; (\*) Alternatively, antigen retrieval may be performed with citrate buffer pH 6.0**

**Positive Controls:**

**WB:** T-47D cells, mouse skin tissue, rat skin tissue, HeLa cells, MCF-7 cells, A431 cells, HaCaT cells

**IHC:** mouse esophagus tissue, human skin tissue, mouse skin tissue

**IF-P:** mouse skin tissue,

**IF/ICC:** MCF-7 cells,

## Background Information

Cytokeratin 39 (CK-39) is a member of the cytokeratin family, a group of intermediate filament proteins primarily expressed in epithelial cells. Cytokeratins are classified into Type I (acidic) and Type II (basic) subfamilies, which pair to form heteropolymers essential for maintaining cellular structural integrity, mechanical stability, and stress resistance. CK-39 is predominantly expressed in stratified and glandular epithelia, such as those found in the prostate, bladder, and respiratory tract. Its expression pattern may vary depending on tissue differentiation states.

## Storage

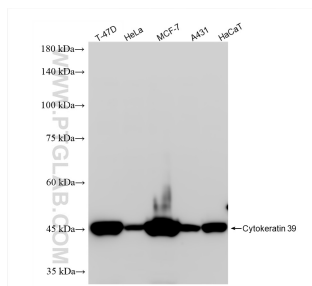
**Storage:**  
Store at -20°C. Stable for one year after shipment.  
**Storage Buffer:**  
PBS with 0.02% sodium azide and 50% glycerol, pH7.3  
Aliquoting is unnecessary for -20°C storage

\*\*\* 20ul sizes contain 0.1% BSA

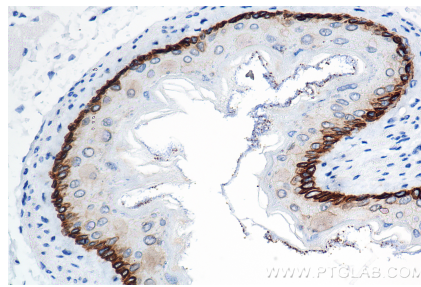
For technical support and original validation data for this product please contact:  
T: 1 (888) 4PTGLAB (1-888-478-4522) (toll free in USA), or 1(312) 455-8498 (outside USA)  
E: [proteintech@ptglab.com](mailto:proteintech@ptglab.com)  
W: [ptglab.com](http://ptglab.com)

This product is exclusively available under Proteintech Group brand and is not available to purchase from any other manufacturer.

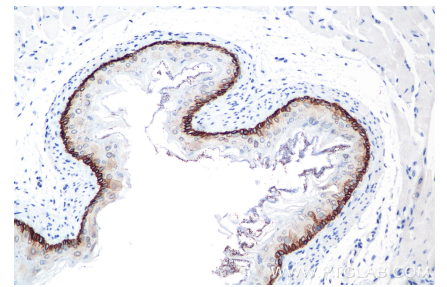
## Selected Validation Data



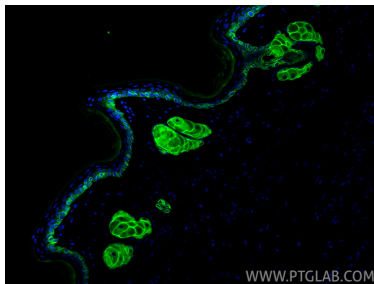
Various lysates were subjected to SDS PAGE followed by western blot with 86277-2-RR (KRT39 antibody) at dilution of 1:5000 incubated at room temperature for 1.5 hours.



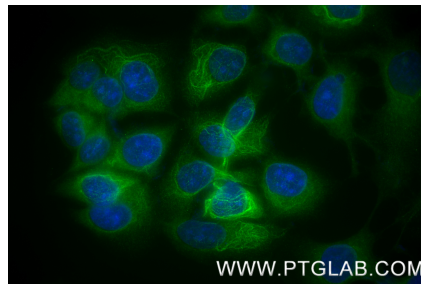
Immunohistochemical analysis of paraffin-embedded mouse esophagus tissue slide using 86277-2-RR (Cytokeratin 39 antibody) at dilution of 1:2000 (under 40x lens). Heat mediated antigen retrieval with Tris-EDTA buffer (pH 9.0).



Immunohistochemical analysis of paraffin-embedded mouse esophagus tissue slide using 86277-2-RR (Cytokeratin 39 antibody) at dilution of 1:2000 (under 20x lens). Heat mediated antigen retrieval with Tris-EDTA buffer (pH 9.0).



Immunofluorescent analysis of (4% PFA) fixed paraffin-embedded mouse skin tissue using Cytokeratin 39 antibody (86277-2-RR, Clone: 250891F5) at dilution of 1:200 and CoraLite® 488-Conjugated Goat Anti-Rabbit IgG(H+L) (SA00013-2). Heat mediated antigen retrieval with Tris-EDTA buffer (pH 9.0).



Immunofluorescent analysis of (-20°C Methanol) fixed MCF-7 cells using Cytokeratin 39 antibody (86277-2-RR, Clone: 250891F5) at dilution of 1:200 and CoraLite® 488-Conjugated Goat Anti-Rabbit IgG(H+L) (SA00013-2).