

For Research Use Only

UBE2T/HSPC150 Recombinant monoclonal antibody, PBS Only

Catalog Number:86278-1-PBS



Basic Information

Catalog Number: 86278-1-PBS	GenBank Accession Number: BC004152	Purification Method: Protein A purification
Size: 100ug , Concentration: 1 mg/ml by Nanodrop;	GeneID (NCBI): 29089	CloneNo.: 250784D6
Source: Rabbit	UNIPROT ID: Q9NPD8	
Isotype: IgG	Full Name: ubiquitin-conjugating enzyme E2T (putative)	
Immunogen Catalog Number: AG0153	Calculated MW: 23 kDa	
	Observed MW: 23 kDa	

Applications

Tested Applications:
WB, IHC, Indirect ELISA

Species Specificity:
human

Background Information

Ubiquitin (Ub)-mediated protein degradation pathway involves three sequential enzymatic steps that facilitate the conjugation of Ub to specific protein substrates. The first step requires ATP-dependent activation of the C-terminus of Ub and the assembly of multi-Ubs by Ub-activating enzyme E1. The ubiquitin-conjugating enzyme E2, catalytic (UBC_c) domain, is then conjugated to Ubs, through a thiol-ester linkage between a conserved cysteine and the C-terminus of Ub, to generate an intermediate Ub-E2 complex. Then the E3, a ligase, catalyzes the transfer of Ub from E2 to the appropriate substrate. This pathway regulates many fundamental cellular processes. There are also other E2s which form thiol-ester linkages without the use of E3s as well as several UBC homologs (TSG101, Mms2, Croc-1 and similar proteins), which lack the active site cysteine essential for ubiquitination and appear to function in DNA repair pathways.

Storage

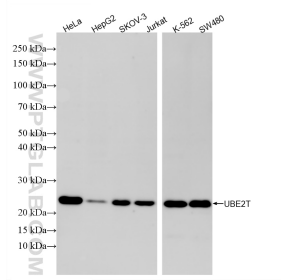
Storage:
Store at -80°C.

Storage Buffer:
PBS only, pH7.3

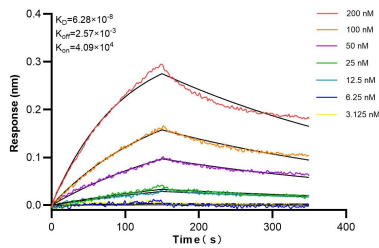
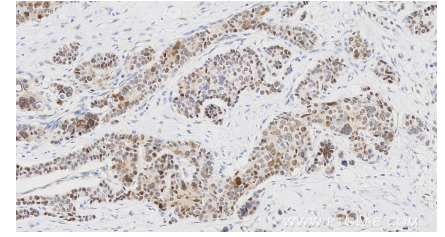
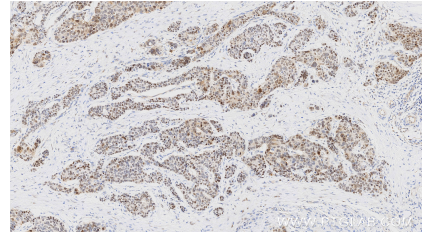
For technical support and original validation data for this product please contact:
T: 1 (888) 4PTGLAB (1-888-478-4522) (toll free in USA), or 1(312) 455-8498 (outside USA) E: proteintech@ptglab.com
W: ptglab.com

This product is exclusively available under Proteintech Group brand and is not available to purchase from any other manufacturer.

Selected Validation Data



Various lysates were subjected to SDS PAGE followed by western blot with 86278-1-RR (UBE2T antibody) at dilution of 1:2000 incubated at room temperature for 1.5 hours. This data was developed using the same antibody clone with 86278-1-PBS in a different storage buffer formulation.



Biolayer interferometry (BLI) kinetic assays of 86278-1-RR against Human UBE2T/HSPC150 were performed. The affinity constant is 62.8 nM.