

For Research Use Only

GRM1/mGluR1 Recombinant monoclonal antibody, PBS Only

Catalog Number: 86280-1-PBS



Basic Information

Catalog Number: 86280-1-PBS	GenBank Accession Number: NM_000838	Purification Method: Protein A purification
Size: 100ug , Concentration: 1 mg/ml by Nanodrop;	GeneID (NCBI): 2911	CloneNo.: 250635C9
Source: Rabbit	UNIPROT ID: Q13255	
Isotype: IgG	Full Name: glutamate receptor, metabotropic 1	
	Calculated MW: 132 kDa	
	Observed MW: 130-140 kDa	

Applications

Tested Applications:
WB, Indirect ELISA

Species Specificity:
human, mouse, rat

Background Information

GRM1, also named as GPRC1A and MGLUR1, belongs to the G-protein coupled receptor 3 family. GRM1 is a receptor for glutamate. The activity of GRM1 is mediated by a G-protein that activates a phosphatidylinositol-calcium second messenger system. It may participate in the central action of glutamate in the CNS, such as long-term potentiation in the hippocampus and long-term depression in the cerebellum.

Storage

Storage:
Store at -80°C.

Storage Buffer:
PBS only, pH7.3

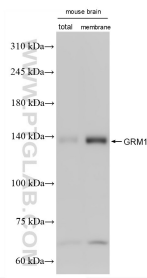
For technical support and original validation data for this product please contact:

T: 1 (888) 4PTGLAB (1-888-478-4522) (toll free in USA), or 1(312) 455-8498 (outside USA)

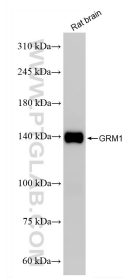
E: proteintech@ptglab.com
W: ptglab.com

This product is exclusively available under Proteintech Group brand and is not available to purchase from any other manufacturer.

Selected Validation Data



Various lysates were subjected to SDS PAGE followed by western blot with 86280-1-RR (GRM1/mGluR1 antibody) at dilution of 1:2000 incubated at room temperature for 1.5 hours. This data was developed using the same antibody clone with 86280-1-PBS in a different storage buffer formulation.



rat brain tissue were subjected to SDS PAGE followed by western blot with 86280-1-RR (GRM1/mGluR1 antibody) at dilution of 1:2000 incubated at room temperature for 1.5 hours. This data was developed using the same antibody clone with 86280-1-PBS in a different storage buffer formulation.