

For Research Use Only

# GRM1/mGluR1 Recombinant monoclonal antibody

Catalog Number: 86280-1-RR



## Basic Information

<b>Catalog Number:</b> 86280-1-RR	<b>GenBank Accession Number:</b> NM_000838	<b>Purification Method:</b> Protein A purification
<b>Size:</b> 100ul , Concentration: 1000 µg/ml by Nanodrop;	<b>GeneID (NCBI):</b> 2911	<b>CloneNo.:</b> 250635C9
<b>Source:</b> Rabbit	<b>UNIPROT ID:</b> Q13255	<b>Recommended Dilutions:</b> WB: 1:1000-1:4000
<b>Isotype:</b> IgG	<b>Full Name:</b> glutamate receptor, metabotropic 1	
	<b>Calculated MW:</b> 132 kDa	
	<b>Observed MW:</b> 130-140 kDa	

## Applications

<b>Tested Applications:</b> WB, ELISA	<b>Positive Controls:</b> WB : rat brain tissue, mouse brain tissue
<b>Species Specificity:</b> human, mouse, rat	

## Background Information

GRM1, also named as GPRC1A and MGLUR1, belongs to the G-protein coupled receptor 3 family. GRM1 is a receptor for glutamate. The activity of GRM1 is mediated by a G-protein that activates a phosphatidylinositol-calcium second messenger system. It may participate in the central action of glutamate in the CNS, such as long-term potentiation in the hippocampus and long-term depression in the cerebellum.

## Storage

**Storage:**  
Store at -20°C. Stable for one year after shipment.  
**Storage Buffer:**  
PBS with 0.02% sodium azide and 50% glycerol, pH7.3  
Aliquoting is unnecessary for -20°C storage

\*\*\* 20ul sizes contain 0.1% BSA

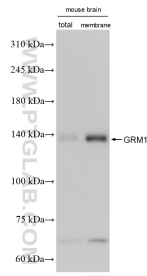
For technical support and original validation data for this product please contact:

T: 1 (888) 4PTGLAB (1-888-478-4522) (toll free in USA), or 1(312) 455-8498 (outside USA)

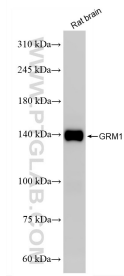
E: [proteintech@ptglab.com](mailto:proteintech@ptglab.com)  
W: [ptglab.com](http://ptglab.com)

This product is exclusively available under Proteintech Group brand and is not available to purchase from any other manufacturer.

## Selected Validation Data



Various lysates were subjected to SDS PAGE followed by western blot with 86280-1-RR (GRM1/mGluR1 antibody) at dilution of 1:2000 incubated at room temperature for 1.5 hours.



rat brain tissue were subjected to SDS PAGE followed by western blot with 86280-1-RR (GRM1/mGluR1 antibody) at dilution of 1:2000 incubated at room temperature for 1.5 hours.