

For Research Use Only

# Complement C6 Recombinant monoclonal antibody, PBS Only

Catalog Number: 86286-3-PBS



## Basic Information

<b>Catalog Number:</b> 86286-3-PBS	<b>GenBank Accession Number:</b> BC035723	<b>Purification Method:</b> Protein A purification
<b>Size:</b> 100ug, Concentration: 1 mg/ml by Nanodrop;	<b>GeneID (NCBI):</b> 729	<b>CloneNo.:</b> 250971A10
<b>Source:</b> Rabbit	<b>UNIPROT ID:</b> P13671	
<b>Isotype:</b> IgG	<b>Full Name:</b> complement component 6	
<b>Immunogen Catalog Number:</b> EG4529	<b>Calculated MW:</b> 934 aa, 105 kDa	
	<b>Observed MW:</b> 105-120 kDa	

## Applications

**Tested Applications:**  
WB, Indirect ELISA  
**Species Specificity:**  
human

## Background Information

The final consequence of complement activation is formation of the membrane attack complex (MAC), a multiprotein assembly that perforates cell membranes, forming transmembrane channels. C6 is 1 of 5 late-acting proteins of complement that participate in assembly and function of the MAC. The deduced C6 protein contains 934 amino acids, including a 21-amino acid N-terminal signal sequence and 2 N-glycosylation sites. Mutations in the C6 gene are associated with complement component-6 deficiency.

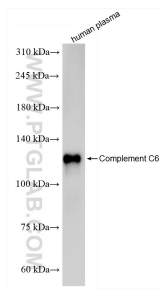
## Storage

**Storage:**  
Store at -80°C.  
**Storage Buffer:**  
PBS only, pH7.3

For technical support and original validation data for this product please contact:  
T: 1 (888) 4PTGLAB (1-888-478-4522) (toll free in USA), or 1(312) 455-8498 (outside USA)  
E: [proteintech@ptglab.com](mailto:proteintech@ptglab.com)  
W: [ptglab.com](http://ptglab.com)

This product is exclusively available under Proteintech Group brand and is not available to purchase from any other manufacturer.

## Selected Validation Data



human plasma were subjected to SDS PAGE followed by western blot with 86286-3-RR (Complement C6 antibody) at dilution of 1:3000 incubated at room temperature for 1.5 hours. This data was developed using the same antibody clone with 86286-3-PBS in a different storage buffer formulation.