

For Research Use Only

Complement C6 Recombinant monoclonal antibody

Catalog Number: 86286-3-RR



Basic Information

Catalog Number:

86286-3-RR

Size:

100ul, Concentration: 1000 µg/ml by Nanodrop;

Source:

Rabbit

Isotype:

IgG

Immunogen Catalog Number:

EG4529

GenBank Accession Number:

BC035723

GeneID (NCBI):

729

UNIPROT ID:

P13671

Full Name:

complement component 6

Calculated MW:

934 aa, 105 kDa

Observed MW:

105-120 kDa

Purification Method:

Protein A purification

CloneNo.:

250971A10

Recommended Dilutions:

WB: 1:1000-1:6000

Applications

Tested Applications:

WB, ELISA

Species Specificity:

human

Positive Controls:

WB : human plasma,

Background Information

The final consequence of complement activation is formation of the membrane attack complex (MAC), a multiprotein assembly that perforates cell membranes, forming transmembrane channels. C6 is 1 of 5 late-acting proteins of complement that participate in assembly and function of the MAC. The deduced C6 protein contains 934 amino acids, including a 21-amino acid N-terminal signal sequence and 2 N-glycosylation sites. Mutations in the C6 gene are associated with complement component-6 deficiency.

Storage

Storage:

Store at -20°C. Stable for one year after shipment.

Storage Buffer:

PBS with 0.02% sodium azide and 50% glycerol, pH7.3

Aliquoting is unnecessary for -20°C storage

*** 20ul sizes contain 0.1% BSA

For technical support and original validation data for this product please contact:

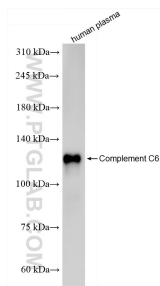
T: 1 (888) 4PTGLAB (1-888-478-4522) (toll free in USA), or 1(312) 455-8498 (outside USA)

E: proteintech@ptglab.com

W: ptglab.com

This product is exclusively available under Proteintech Group brand and is not available to purchase from any other manufacturer.

Selected Validation Data



human plasma were subjected to SDS PAGE followed by western blot with 86286-3-RR (Complement C6 antibody) at dilution of 1:3000 incubated at room temperature for 1.5 hours.