

For Research Use Only

Complement C6 Recombinant monoclonal antibody, PBS Only (Detector)

Catalog Number: 86286-4-PBS



Basic Information

Catalog Number: 86286-4-PBS	GenBank Accession Number: BC035723	Purification Method: Protein A purification
Size: 100ug , Concentration: 1 mg/ml by Nanodrop;	GeneID (NCBI): 729	CloneNo.: 250971E10
Source: Rabbit	UNIPROT ID: P13671	
Isotype: IgG	Full Name: complement component 6	
Immunogen Catalog Number: EG4529	Calculated MW: 934 aa, 105 kDa	

Applications

Tested Applications:
Sandwich ELISA, Indirect ELISA

Species Specificity:
human

Product Information

86286-4-PBS targets Complement C6 as part of a matched antibody pair:

MP02310-2: 86286-2-PBS capture and 86286-4-PBS detection (validated in Sandwich ELISA)

Unconjugated rabbit recombinant monoclonal antibody in PBS only (BSA and azide free) storage buffer at a concentration of 1 mg/mL, ready for conjugation. Created using Proteintech's proprietary in-house recombinant technology. Recombinant production enables unrivalled batch-to-batch consistency, easy scale-up, and future security of supply.

This conjugation ready format makes antibodies ideal for use in many applications including: ELISAs, multiplex assays requiring matched pairs, mass cytometry, and multiplex imaging applications. Antibody use should be optimized by the end user for each application and assay.

Storage

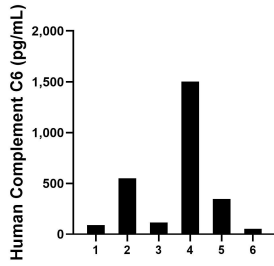
Storage:
Store at -80°C.

Storage Buffer:
PBS only, pH7.3

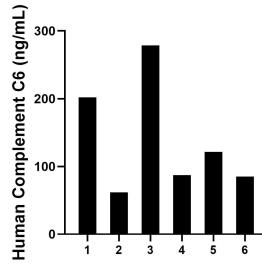
For technical support and original validation data for this product please contact:
T: 1 (888) 4PTGLAB (1-888-478-4522) (toll free in USA), or 1(312) 455-8498 (outside USA) E: proteintech@ptglab.com
W: ptglab.com

This product is exclusively available under Proteintech Group brand and is not available to purchase from any other manufacturer.

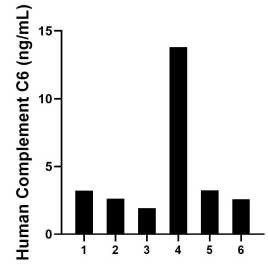
Selected Validation Data



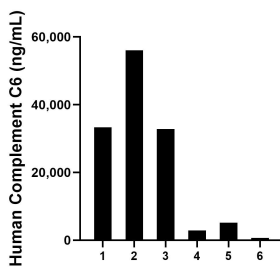
Urine of six individual healthy human donors was measured. The Complement C6 concentration of detected samples was determined to be 443.1 pg/mL with a range of 54.8-1,501.2 pg/mL.



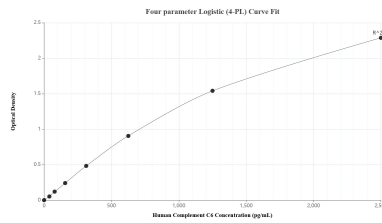
Human milk of six individual healthy female donors was measured. The Complement C6 concentration of detected samples was determined to be 139.3 ng/mL with a range of 61.9-278.6 ng/mL.



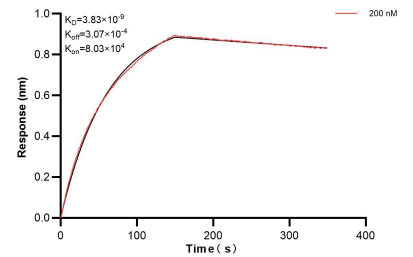
Saliva of six individual healthy female donors was measured. The Complement C6 concentration of detected samples was determined to be 4.6 ng/mL with a range of 1.9-13.8 ng/mL.



Serum of six individual healthy human donors was measured. The Complement C6 concentration of detected samples was determined to be 21,824.0 ng/mL with a range of 676.5-56,025.2 ng/mL.



Sandwich ELISA standard curve of MP02310-2, Human Complement C6 Recombinant Matched Antibody Pair - PBS only. 86286-2-PBS was coated to a plate as the capture antibody and incubated with serial dilutions of standard Eg4529. 86286-4-PBS was HRP conjugated as the detection antibody. Range: 39.1-2500 pg/mL.



Bi-layer interferometry (BLI) kinetic assay of 86286-4-PBS against Human Complement C6 was performed. The affinity constant is 3.83 nM.