

For Research Use Only

# CCL24 Recombinant antibody, PBS Only (Capture)

Catalog Number: 86287-2-PBS



## Basic Information

<b>Catalog Number:</b> 86287-2-PBS	<b>GenBank Accession Number:</b> NM_002991	<b>Purification Method:</b> Protein A purification
<b>Size:</b> 100ug, Concentration: 1 mg/ml by Nanodrop;	<b>GeneID (NCBI):</b> 6369	<b>CloneNo.:</b> 243063C7
<b>Source:</b> Rabbit	<b>UNIPROT ID:</b> O00175	
<b>Isotype:</b> IgG	<b>Full Name:</b> chemokine (C-C motif) ligand 24	
<b>Immunogen Catalog Number:</b> EG0395	<b>Calculated MW:</b> 13kd	

## Applications

**Tested Applications:**  
Sandwich ELISA, Indirect ELISA, Sample test

**Species Specificity:**  
human

## Product Information

86287-2-PBS targets CCL24 as part of a matched antibody pair.

MP02329-1: 86287-2-PBS capture and 86287-1-PBS detection (validated in Sandwich ELISA)

Unconjugated rabbit recombinant monoclonal antibody in PBS only (BSA and azide free) storage buffer at a concentration of 1 mg/mL, ready for conjugation. Created using Proteintech's proprietary in-house recombinant technology. Recombinant production enables unrivalled batch-to-batch consistency, easy scale-up, and future security of supply.

This conjugation ready format makes antibodies ideal for use in many applications including: ELISAs, multiplex assays requiring matched pairs, mass cytometry, and multiplex imaging applications. Antibody use should be optimized by the end user for each application and assay.

## Storage

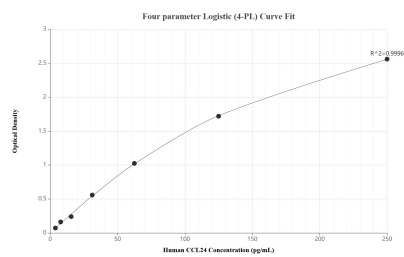
**Storage:**  
Store at -80°C.

**Storage Buffer:**  
PBS only, pH7.3

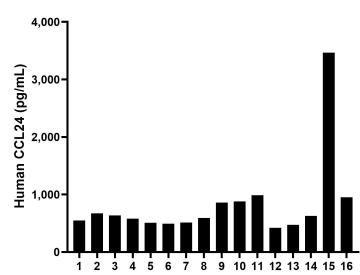
For technical support and original validation data for this product please contact:  
T: 1 (888) 4PTGLAB (1-888-478-4522) (toll free in USA), or 1(312) 455-8498 (outside USA)  
E: [proteintech@ptglab.com](mailto:proteintech@ptglab.com)  
W: [ptglab.com](http://ptglab.com)

This product is exclusively available under Proteintech Group brand and is not available to purchase from any other manufacturer.

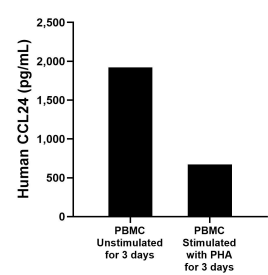
## Selected Validation Data



Sandwich ELISA standard curve of MP02329-1, Human CCL24 Recombinant Matched Antibody Pair - PBS only. 86287-2-PBS was coated to a plate as the capture antibody and incubated with serial dilutions of standard Eg0395. 86287-1-PBS was HRP conjugated as the detection antibody. Range: 3.91-250 pg/mL



Serum of sixteen individual healthy human donors was measured. The CCL24 concentration of detected samples was determined to be 825.1 pg/mL with a range of 420.9-3,463.9 pg/mL



Human peripheral blood mononuclear cells (PBMC) were cultured unstimulated or stimulated with 10 µg/mL PHA for 3 days. The mean CCL24 concentration was determined to be 1,920.6 pg/mL in unstimulated PBMC supernatant, 673.2 pg/mL in PHA stimulated PBMC supernatant.