

For Research Use Only

# ALDH4A1 Recombinant antibody

Catalog Number: 86297-1-RR



## Basic Information

<b>Catalog Number:</b> 86297-1-RR	<b>GenBank Accession Number:</b> BC023600	<b>Purification Method:</b> Protein A purification
<b>Size:</b> 100ul , Concentration: 1000 µg/ml by Nanodrop;	<b>GeneID (NCBI):</b> 8659	<b>CloneNo.:</b> 250957F8
<b>Source:</b> Rabbit	<b>UNIPROT ID:</b> P30038	<b>Recommended Dilutions:</b> WB: 1:5000-1:50000
<b>Isotype:</b> IgG	<b>Full Name:</b> aldehyde dehydrogenase 4 family, member A1	
<b>Immunogen Catalog Number:</b> AG2147	<b>Calculated MW:</b> 563 aa, 62 kDa	
	<b>Observed MW:</b> 62 kDa	

## Applications

<b>Tested Applications:</b> WB, ELISA	<b>Positive Controls:</b>
<b>Species Specificity:</b> human, mouse, rat	<b>WB :</b> HepG2 cells, K-562 cells, A549 cells, BT-474 cells, mouse skeletal muscle tissue, rat skeletal muscle tissue, human skeletal muscle tissue

## Background Information

ALDH4A1 (Aldehyde dehydrogenase family 4 member A1) is also named as ALDH4, P5CDH, P5C dehydrogenase and belongs to the aldehyde dehydrogenase family. P5CDH is a mitochondrial matrix NAD(+) dependent dehydrogenase which catalyzes the second step of the proline degradation pathway, converting pyrroline-5-carboxylate to glutamate. Defects in ALDH4A1 are the cause of hyperprolinemia type 2 (HP-2).

## Storage

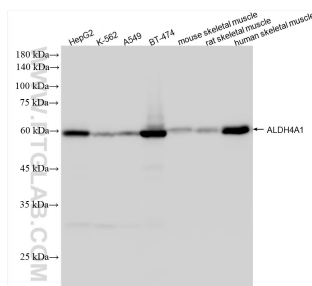
**Storage:**  
Store at -20°C. Stable for one year after shipment.  
**Storage Buffer:**  
PBS with 0.02% sodium azide and 50% glycerol, pH7.3  
**Aliquoting is unnecessary for -20°C storage**

\*\*\* 20ul sizes contain 0.1% BSA

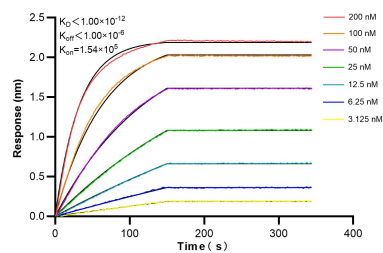
For technical support and original validation data for this product please contact:  
T: 1 (888) 4PTGLAB (1-888-478-4522) (toll free in USA), or 1(312) 455-8498 (outside USA)  
E: [proteintech@ptglab.com](mailto:proteintech@ptglab.com)  
W: [ptglab.com](http://ptglab.com)

This product is exclusively available under Proteintech Group brand and is not available to purchase from any other manufacturer.

## Selected Validation Data



Various lysates were subjected to SDS PAGE followed by western blot with 86297-1-RR (ALDH4A1 antibody) at dilution of 1:10000 incubated at room temperature for 1.5 hours.



Biolayer interferometry (BLI) kinetic assays of 86297-1-RR against Human ALDH4A1 were performed. The affinity constant is below 1 pM.