

For Research Use Only

# ALDH4A1 Recombinant antibody, PBS Only (Detector)

Catalog Number:86297-3-PBS



## Basic Information

|   |   |   |
|---|---|---|
| <b>Catalog Number:</b><br>86297-3-PBS                       | <b>GenBank Accession Number:</b><br>BC023600                    | <b>Purification Method:</b><br>Protein A purification |
| <b>Size:</b><br>100ug , Concentration: 1 mg/ml by Nanodrop; | <b>GeneID (NCBI):</b><br>8659                                   | <b>CloneNo.:</b><br>250957C10                         |
| <b>Source:</b><br>Rabbit                                    | <b>UNIPROT ID:</b><br>P30038                                    |   |
| <b>Isotype:</b><br>IgG                                      | <b>Full Name:</b><br>aldehyde dehydrogenase 4 family, member A1 |   |
| <b>Immunogen Catalog Number:</b><br>AG2147                  | <b>Calculated MW:</b><br>563 aa, 62 kDa                         |   |

## Applications

**Tested Applications:**  
Sandwich ELISA, Indirect ELISA, Sample test

**Species Specificity:**  
human

## Product Information

86297-3-PBS targets ALDH4A1 as part of a matched antibody pair:

MP02370-2: 86297-4-PBS capture and 86297-3-PBS detection (validated in Sandwich ELISA)

Unconjugated rabbit recombinant monoclonal antibody in PBS only (BSA and azide free) storage buffer at a concentration of 1 mg/mL, ready for conjugation. Created using Proteintech's proprietary in-house recombinant technology. Recombinant production enables unrivalled batch-to-batch consistency, easy scale-up, and future security of supply.

This conjugation ready format makes antibodies ideal for use in many applications including: ELISAs, multiplex assays requiring matched pairs, mass cytometry, and multiplex imaging applications. Antibody use should be optimized by the end user for each application and assay.

## Storage

**Storage:**  
Store at -80°C.

**Storage Buffer:**  
PBS only, pH7.3

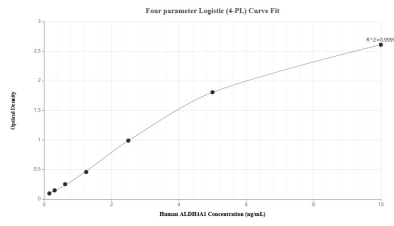
For technical support and original validation data for this product please contact:

T: 1 (888) 4PTGLAB (1-888-478-4522) (toll free in USA), or 1(312) 455-8498 (outside USA)

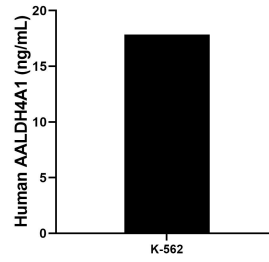
E: [proteintech@ptglab.com](mailto:proteintech@ptglab.com)  
W: [ptglab.com](http://ptglab.com)

**This product is exclusively available under Proteintech Group brand and is not available to purchase from any other manufacturer.**

## Selected Validation Data



Sandwich ELISA standard curve of MP02370-2, Human ALDH4A1 Recombinant Matched Antibody Pair - PBS only. 86297-4-PBS was coated to a plate as the capture antibody and incubated with serial dilutions of standard Ag2147. 86297-3-PBS was HRP conjugated as the detection antibody. Range: 0.156-10 ng/mL



The mean ALDH4A1 concentration was determined to be 17.85 ng/mL in K-562 cell extract based on a 1.2 mg/mL extract load.