

For Research Use Only

ALDH4A1 Recombinant antibody, PBS Only (Capture)

Catalog Number:86297-4-PBS



Basic Information

| | | |
|-------------------------------------------------------------|-----------------------------------------------------------------|-------------------------------------------------------|
| Catalog Number: 86297-4-PBS | GenBank Accession Number: BC023600 | Purification Method: Protein A purification |
| Size: 100ug , Concentration: 1 mg/ml by Nanodrop; | GeneID (NCBI): 8659 | CloneNo.: 250957A9 |
| Source: Rabbit | UNIPROT ID: P30038 | |
| Isotype: IgG | Full Name: aldehyde dehydrogenase 4 family, member A1 | |
| Immunogen Catalog Number: AG2147 | Calculated MW: 563 aa, 62 kDa | |

Applications

Tested Applications:
Sandwich ELISA, Indirect ELISA, Sample test

Species Specificity:
human

Product Information

86297-4-PBS targets ALDH4A1 as part of a matched antibody pair:

MP02370-2: 86297-4-PBS capture and 86297-3-PBS detection (validated in Sandwich ELISA)

Unconjugated rabbit recombinant monoclonal antibody in PBS only (BSA and azide free) storage buffer at a concentration of 1 mg/mL, ready for conjugation. Created using Proteintech's proprietary in-house recombinant technology. Recombinant production enables unrivalled batch-to-batch consistency, easy scale-up, and future security of supply.

This conjugation ready format makes antibodies ideal for use in many applications including: ELISAs, multiplex assays requiring matched pairs, mass cytometry, and multiplex imaging applications. Antibody use should be optimized by the end user for each application and assay.

Storage

Storage:
Store at -80°C.

Storage Buffer:
PBS only, pH7.3

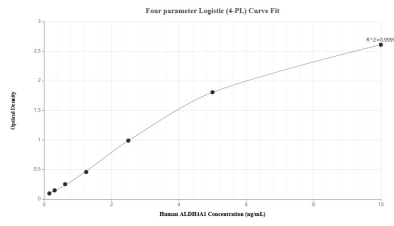
For technical support and original validation data for this product please contact:

T: 1 (888) 4PTGLAB (1-888-478-4522) (toll free in USA), or 1(312) 455-8498 (outside USA)

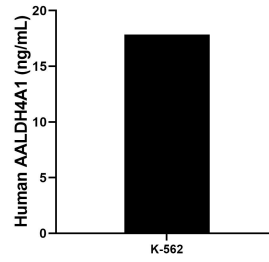
E: proteintech@ptglab.com
W: ptglab.com

This product is exclusively available under Proteintech Group brand and is not available to purchase from any other manufacturer.

Selected Validation Data



Sandwich ELISA standard curve of MP02370-2, Human ALDH4A1 Recombinant Matched Antibody Pair - PBS only. 86297-4-PBS was coated to a plate as the capture antibody and incubated with serial dilutions of standard Ag2147. 86297-3-PBS was HRP conjugated as the detection antibody. Range: 0.156-10 ng/mL



The mean ALDH4A1 concentration was determined to be 17.85 ng/mL in K-562 cell extract based on a 1.2 mg/mL extract load.