

For Research Use Only

# IL13RA2,CD213A2 Recombinant antibody, PBS Only (Capture)

Catalog Number:86298-3-PBS



## Basic Information

<b>Catalog Number:</b> 86298-3-PBS	<b>GenBank Accession Number:</b> BC020739	<b>Purification Method:</b> Protein A purification
<b>Size:</b> 100ug , Concentration: 1 mg/ml by Nanodrop;	<b>GeneID (NCBI):</b> 3598	<b>CloneNo.:</b> 250952D9
<b>Source:</b> Rabbit	<b>UNIPROT ID:</b> Q14627	
<b>Isotype:</b> IgG	<b>Full Name:</b> interleukin 13 receptor, alpha 2	
<b>Immunogen Catalog Number:</b> EG2579	<b>Calculated MW:</b> 380 aa, 44 kDa	

## Applications

**Tested Applications:**  
Sandwich ELISA, Indirect ELISA, Sample test

**Species Specificity:**  
human

## Product Information

86298-3-PBS targets IL13RA2,CD213A2 as part of a matched antibody pair.

MP02369-2: 86298-3-PBS capture and 86298-1-PBS detection (validated in Sandwich ELISA)

Unconjugated rabbit recombinant monoclonal antibody in PBS only (BSA and azide free) storage buffer at a concentration of 1 mg/mL, ready for conjugation. Created using Proteintech's proprietary in-house recombinant technology. Recombinant production enables unrivalled batch-to-batch consistency, easy scale-up, and future security of supply.

This conjugation ready format makes antibodies ideal for use in many applications including: ELISAs, multiplex assays requiring matched pairs, mass cytometry, and multiplex imaging applications. Antibody use should be optimized by the end user for each application and assay.

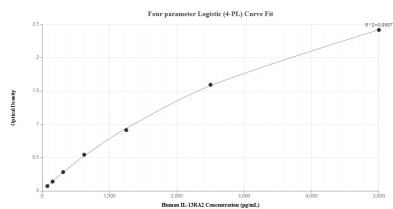
## Storage

**Storage:**  
Store at -80°C.  
**Storage Buffer:**  
PBS only, pH7.3

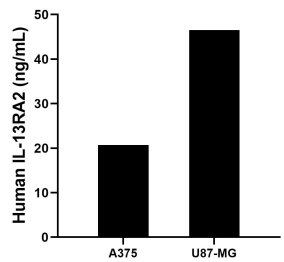
For technical support and original validation data for this product please contact:  
T: 1 (888) 4PTGLAB (1-888-478-4522) (toll free in USA), or 1(312) 455-8498 (outside USA)  
E: [proteintech@ptglab.com](mailto:proteintech@ptglab.com)  
W: [ptglab.com](http://ptglab.com)

This product is exclusively available under Proteintech Group brand and is not available to purchase from any other manufacturer.

## Selected Validation Data



Sandwich ELISA standard curve of MP02369-2, Human IL-13RA2 Recombinant Matched Antibody Pair - PBS only. 86298-3-PBS was coated to a plate as the capture antibody and incubated with serial dilutions of standard Eg2579. 86298-1-PBS was HRP conjugated as the detection antibody. Range: 78.1-5000 pg/mL



A375 cells and U87-MG cells were cultured in DMEM supplemented with 10% fetal bovine serum, 2.5 mM L-glutamine, 100 U/mL penicillin, and 100 µg/mL streptomycin sulfate. An aliquot of the cell culture supernatants was removed, assayed for human IL-13RA2, and measured 20.73 and 46.54 ng/mL respectively.