

For Research Use Only

L-Plastin Recombinant antibody, PBS Only

Catalog Number: 86299-3-PBS



Basic Information

Catalog Number: 86299-3-PBS	GenBank Accession Number: BC010271	Purification Method: Protein A purification
Size: 100ug , Concentration: 1 mg/ml by Nanodrop;	GeneID (NCBI): 3936	CloneNo.: 251063A3
Source: Rabbit	UNIPROT ID: P13796	
Isotype: IgG	Full Name: lymphocyte cytosolic protein 1 (L-plastin)	
Immunogen Catalog Number: AG3571	Calculated MW: 627 aa, 64 kDa	
	Observed MW: 64-70 kDa	

Applications

Tested Applications:
WB, IF/ICC, Indirect ELISA

Species Specificity:
human, mouse

Background Information

LCP1, also known as L-Plastin, is a member of the Plastin gene family. The family members include L-Plastin (LCP1), T-Plastin (PLS3), and I-Plastin (PLS1), which can regulate the dynamic reorganization of the cytoskeleton by binding and cross-linking actin filaments. In lymphocytes, LCP1 can regulate immune responses, especially during inflammation and infection. It acts as a key regulator of T-cell activation by responding to co-stimulatory signals through TCR/CD3 and CD2 or CD28, and regulates the cell-surface expression of IL2RA/CD25 and CD69 (PMID: 17294403).

Storage

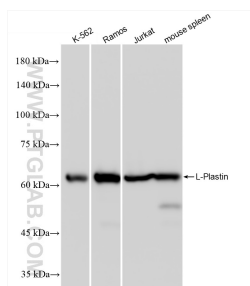
Storage:
Store at -80°C.

Storage Buffer:
PBS only, pH7.3

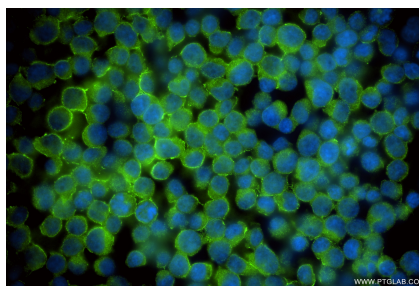
For technical support and original validation data for this product please contact:
T: 1 (888) 4PTGLAB (1-888-478-4522) (toll free in USA), or 1(312) 455-8498 (outside USA)
E: proteintech@ptglab.com
W: ptglab.com

This product is exclusively available under Proteintech Group brand and is not available to purchase from any other manufacturer.

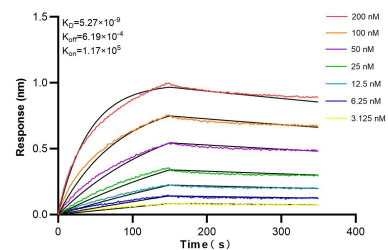
Selected Validation Data



Various lysates were subjected to SDS PAGE followed by western blot with 86299-3-RR (L-Plastin antibody) at dilution of 1:10000 incubated at room temperature for 1.5 hours. This data was developed using the same antibody clone with 86299-3-PBS in a different storage buffer formulation.



Immunofluorescent analysis of (4% PFA) fixed Jurkat cells using L-Plastin antibody (86299-3-RR, Clone: 251063A3) at dilution of 1:400 and CoraLite® 488-Conjugated Goat Anti-Rabbit IgG(H+L) (SA00013-2). This data was developed using the same antibody clone with 86299-3-PBS in a different storage buffer formulation.



Biolayer interferometry (BLI) kinetic assays of 86299-3-RR against Human L-Plastin were performed. The affinity constant is 5.27 nM.