

For Research Use Only

L-Plastin Recombinant monoclonal antibody

Catalog Number: 86299-3-RR



Basic Information

Catalog Number: 86299-3-RR	GenBank Accession Number: BC010271	Purification Method: Protein A purification
Size: 100ul , Concentration: 1000 ug/ml by Nanodrop;	GeneID (NCBI): 3936	CloneNo.: 251063A3
Source: Rabbit	UNIPROT ID: P13796	Recommended Dilutions: WB: 1:5000-1:50000 IF/ICC: 1:200-1:800
Isotype: IgG	Full Name: lymphocyte cytosolic protein 1 (L-plastin)	
Immunogen Catalog Number: AG3571	Calculated MW: 627 aa, 64 kDa	
	Observed MW: 64-70 kDa	

Applications

Tested Applications: WB, IF/ICC, ELISA	Positive Controls:
Species Specificity: human, mouse	WB : K-562 cells, Ramos cells, Jurkat cells, mouse spleen tissue IF/ICC : Jurkat cells,

Background Information

LCP1, also known as L-Plastin, is a member of the Plastin gene family. The family members include L-Plastin (LCP1), T-Plastin (PLS3), and I-Plastin (PLS1), which can regulate the dynamic reorganization of the cytoskeleton by binding and cross-linking actin filaments. In lymphocytes, LCP1 can regulate immune responses, especially during inflammation and infection. It acts as a key regulator of T-cell activation by responding to co-stimulatory signals through TCR/CD3 and CD2 or CD28, and regulates the cell-surface expression of IL2RA/CD25 and CD69 (PMID: 17294403).

Storage

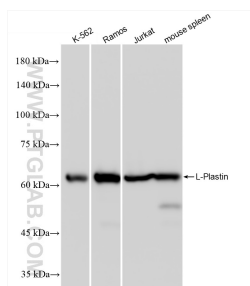
Storage:
Store at -20°C. Stable for one year after shipment.
Storage Buffer:
PBS with 0.02% sodium azide and 50% glycerol, pH7.3
Aliquoting is unnecessary for -20°C storage

*** 20ul sizes contain 0.1% BSA

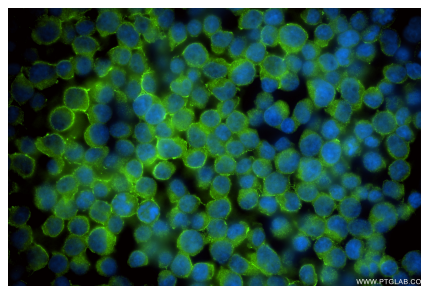
For technical support and original validation data for this product please contact:
T: 1 (888) 4PTGLAB (1-888-478-4522) (toll free in USA), or 1(312) 455-8498 (outside USA)
E: proteintech@ptglab.com
W: ptglab.com

This product is exclusively available under Proteintech Group brand and is not available to purchase from any other manufacturer.

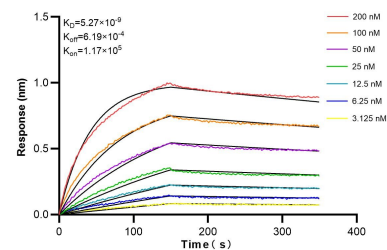
Selected Validation Data



Various lysates were subjected to SDS PAGE followed by western blot with 86299-3-RR (L-Plastin antibody) at dilution of 1:10000 incubated at room temperature for 1.5 hours.



Immunofluorescent analysis of (4% PFA) fixed Jurkat cells using L-Plastin antibody (86299-3-RR, Clone: 251063A3) at dilution of 1:400 and CoraLite® 488-Conjugated Goat Anti-Rabbit IgG(H+L) (SA00013-2).



Biolayer interferometry (BLI) kinetic assays of 86299-3-RR against Human L-Plastin were performed. The affinity constant is 5.27 nM.