

For Research Use Only

# RBM26 Recombinant antibody, PBS Only

Catalog Number: 86302-1-PBS



## Basic Information

Catalog Number:

86302-1-PBS

Size:

100ug, Concentration: 1 mg/ml by Nanodrop;

Source:

Rabbit

Isotype:

IgG

Immunogen Catalog Number:

AG10398

GenBank Accession Number:

BC000791

GeneID (NCBI):

64062

UNIPROT ID:

Q5T8P6

Full Name:

RNA binding motif protein 26

Calculated MW:

983 aa, 111 kDa

Observed MW:

130-140 kDa

Purification Method:

Protein A purification

CloneNo.:

250871F5

## Applications

Tested Applications:

WB, IF/ICC, Indirect ELISA

Species Specificity:

human, mouse, rat

## Storage

Storage:

Store at -80°C.

Storage Buffer:

PBS only, pH7.3

For technical support and original validation data for this product please contact:

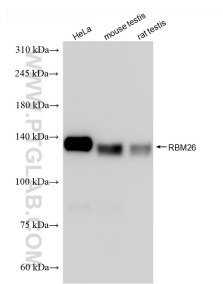
T: 1 (888) 4PTGLAB (1-888-478-4522) (toll free in USA), or 1(312) 455-8498 (outside USA)

E: [proteintech@ptglab.com](mailto:proteintech@ptglab.com)

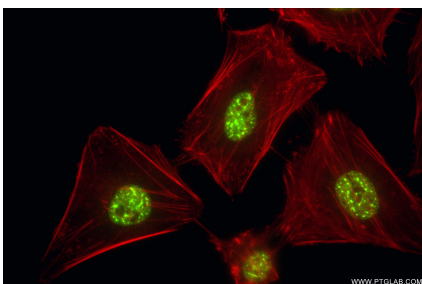
W: [ptglab.com](http://ptglab.com)

This product is exclusively available under Proteintech Group brand and is not available to purchase from any other manufacturer.

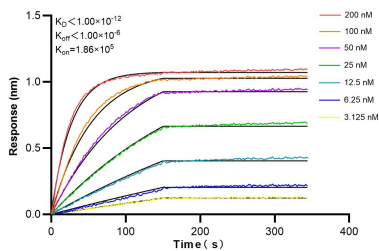
## Selected Validation Data



Various lysates were subjected to SDS PAGE followed by western blot with 86302-1-RR (RBM26 antibody) at dilution of 1:5000 incubated at room temperature for 1.5 hours. This data was developed using the same antibody clone with 86302-1-PBS in a different storage buffer formulation.



Immunofluorescent analysis of (4% PFA) fixed HeLa cells using RBM26 antibody (86302-1-RR, Clone: 250871F5 ) at dilution of 1:800 and CoraLite® 488-Conjugated Goat Anti-Rabbit IgG(H+L) (SA00013-2), CL594-Phalloidin (red). This data was developed using the same antibody clone with 86302-1-PBS in a different storage buffer formulation.



Biolayer interferometry (BLI) kinetic assays of 86302-1-RR against Human RBM26 were performed. The affinity constant is below 1 pM.