

For Research Use Only

Mouse Ace2 Recombinant antibody, PBS Only (Capture)

Catalog Number:86303-3-PBS



Basic Information

Catalog Number: 86303-3-PBS	GenBank Accession Number: NM_001130513.1	Purification Method: Protein A purification
Size: 100ug, Concentration: 1 mg/ml by Nanodrop;	GeneID (NCBI): 70008	CloneNo.: 250137D6
Source: Rabbit	UNIPROT ID: Q8ROI0-1	
Isotype: IgG	Full Name: angiotensin I converting enzyme (peptidyl-dipeptidase A) 2	
Immunogen Catalog Number: EG2834	Calculated MW: 92 kDa	

Applications

Tested Applications:
Sandwich ELISA, Indirect ELISA, Sample test

Species Specificity:
mouse

Product Information

86303-3-PBS targets Ace2 as part of a matched antibody pair:

MP02503-1: 86303-3-PBS capture and 86303-2-PBS detection (validated in Sandwich ELISA)

Unconjugated rabbit recombinant monoclonal antibody in PBS only (BSA and azide free) storage buffer at a concentration of 1 mg/mL, ready for conjugation. Created using Proteintech's proprietary in-house recombinant technology. Recombinant production enables unrivalled batch-to-batch consistency, easy scale-up, and future security of supply.

This conjugation ready format makes antibodies ideal for use in many applications including: ELISAs, multiplex assays requiring matched pairs, mass cytometry, and multiplex imaging applications. Antibody use should be optimized by the end user for each application and assay.

Storage

Storage:
Store at -80°C.

Storage Buffer:
PBS only, pH7.3

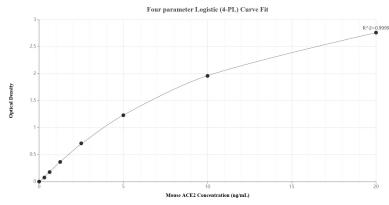
For technical support and original validation data for this product please contact:

T: 1 (888) 4PTGLAB (1-888-478-4522) (toll free in USA), or 1(312) 455-8498 (outside USA)

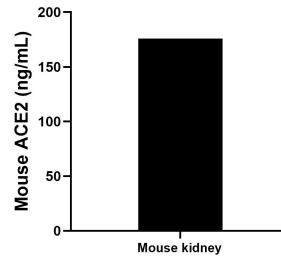
E: proteintech@ptglab.com
W: ptglab.com

This product is exclusively available under Proteintech Group brand and is not available to purchase from any other manufacturer.

Selected Validation Data



Sandwich ELISA standard curve of MP02503-1, Mouse ACE2 Recombinant Matched Antibody Pair - PBS only. 86303-3-PBS was coated to a plate as the capture antibody and incubated with serial dilutions of standard Eg2834. 86303-2-PBS was HRP conjugated as the detection antibody. Range: 0.313-20 ng/mL



The mean ACE2 concentration was determined to be 175.80 ng/mL in mouse kidney tissue extract based on a 8.40 mg/mL extract load.