

For Research Use Only

Mouse L1CAM/CD171 Recombinant monoclonal antibody, PBS Only (Capture)

Catalog Number: 86305-2-PBS



Basic Information

Catalog Number: 86305-2-PBS	GenBank Accession Number: N/A	Purification Method: Protein A purification
Size: 100ug, Concentration: 1 mg/ml by Nanodrop;	GeneID (NCBI): 16728	CloneNo.: 250101C11
Source: Rabbit	UNIPROT ID: P11627	
Isotype: IgG	Full Name: L1 cell adhesion molecule	
Immunogen Catalog Number: EG3022	Calculated MW: 141 kDa	
	Observed MW: 210-250 kDa	

Applications

Tested Applications:
WB, IHC, IF/ICC, Cytometric bead array, Indirect ELISA

Species Specificity:
mouse, rat

Product Information

86305-2-PBS targets L1CAM/CD171 as part of a matched antibody pair:

MP02352-1: 86305-2-PBS capture and 86305-3-PBS detection (validated in Cytometric bead array)

Unconjugated rabbit recombinant monoclonal antibody in PBS only (BSA and azide free) storage buffer at a concentration of 1 mg/mL, ready for conjugation. Created using Proteintech's proprietary in-house recombinant technology. Recombinant production enables unrivalled batch-to-batch consistency, easy scale-up, and future security of supply.

This conjugation ready format makes antibodies ideal for use in many applications including: ELISAs, multiplex assays requiring matched pairs, mass cytometry, and multiplex imaging applications. Antibody use should be optimized by the end user for each application and assay.

Background Information

L1CAM, also known as NCAM-L1 or CD171, is a cell adhesion molecule of the immunoglobulin superfamily. It is a 200-220 kDa transmembrane glycoprotein composed of six Ig-like domains and five fibronectin type III repeats followed by a transmembrane region and a highly conserved cytoplasmic tail (PMID: 3412448; 22796939). L1CAM is primarily expressed in the nervous system and is involved in neuron-neuron adhesion, neurite fasciculation, outgrowth of neurites, cerebellar granule cell migration, neurite outgrowth on Schwann cells and interactions among epithelial cells of intestinal crypts (PMID: 3412448; 10767310).

Storage

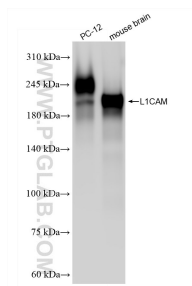
Storage:
Store at -80°C.

Storage Buffer:
PBS only, pH7.3

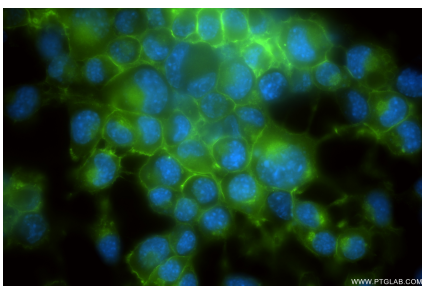
For technical support and original validation data for this product please contact:
T: 1 (888) 4PTGLAB (1-888-478-4522) (toll free in USA), or 1(312) 455-8498 (outside USA)
E: proteintech@ptglab.com
W: ptglab.com

This product is exclusively available under Proteintech Group brand and is not available to purchase from any other manufacturer.

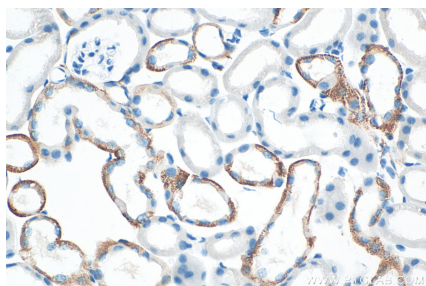
Selected Validation Data



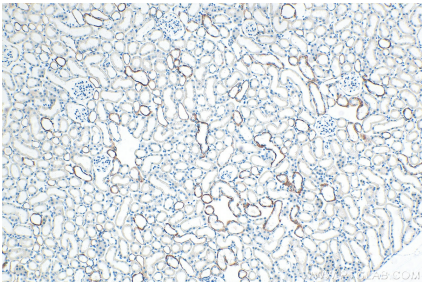
Various lysates were subjected to SDS PAGE followed by western blot with 86305-2-RR (L1CAM/CD171 antibody) at dilution of 1:20000 incubated at room temperature for 1.5 hours. This data was developed using the same antibody clone with 86305-2-PBS in a different storage buffer formulation.



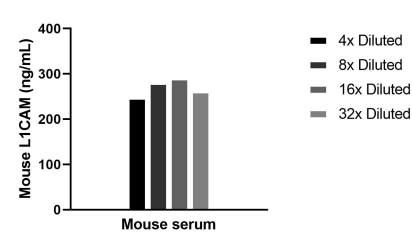
Immunofluorescent analysis of (4% PFA) fixed Neuro-2a cells using L1CAM/CD171 antibody (86305-2-RR, Clone: 250101C11) at dilution of 1:800 and CoraLite® 488-Conjugated Goat Anti-Rabbit IgG(H+L) (SA00013-2). This data was developed using the same antibody clone with 86305-2-PBS in a different storage buffer formulation.



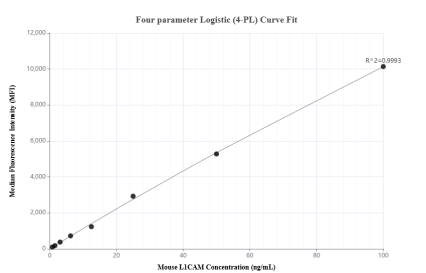
Immunohistochemical analysis of paraffin-embedded mouse kidney tissue slide using 86305-2-RR (L1CAM/CD171 antibody) at dilution of 1:400 (under 40x lens). Heat mediated antigen retrieval with Tris-EDTA buffer (pH 9.0). This data was developed using the same antibody clone with 86305-2-PBS in a different storage buffer formulation.



Immunohistochemical analysis of paraffin-embedded mouse kidney tissue slide using 86305-2-RR (L1CAM/CD171 antibody) at dilution of 1:400 (under 10x lens). Heat mediated antigen retrieval with Tris-EDTA buffer (pH 9.0). This data was developed using the same antibody clone with 86305-2-PBS in a different storage buffer formulation.



The mean L1CAM concentration was determined to be 269.5 ng/mL in mouse serum.



Cytometric bead array standard curve of MP02352-1, MOUSE L1CAM Recombinant Matched Antibody Pair, PBS Only. Capture antibody: 86305-2-PBS. Detection antibody: 86305-3-PBS. Standard: Eg3022. Range: 0.781-100 ng/mL