

For Research Use Only

L1CAM/CD171 Recombinant antibody

Catalog Number: 86305-2-RR



Basic Information

| | | |
|--|--|---|
| Catalog Number: 86305-2-RR | GenBank Accession Number: N/A | Purification Method: Protein A purification |
| Size: 100ul , Concentration: 1000 µg/ml by Nanodrop; | GeneID (NCBI): 16728 | CloneNo.: 250101C11 |
| Source: Rabbit | UNIPROT ID: P11627 | Recommended Dilutions: WB: 1:5000-1:50000 IHC: 1:200-1:800 IF/ICC: 1:400-1:1600 |
| Isotype: IgG | Full Name: L1 cell adhesion molecule | |
| Immunogen Catalog Number: EG3022 | Calculated MW: 141 kDa | |
| | Observed MW: 210-250 kDa | |

Applications

| | |
|--|---|
| Tested Applications: WB, IHC, IF/ICC, ELISA | Positive Controls: |
| Species Specificity: mouse, rat | WB : PC-12 cells, mouse brain tissue |
| Note-IHC: suggested antigen retrieval with TE buffer pH 9.0; (*) Alternatively, antigen retrieval may be performed with citrate buffer pH 6.0 | IHC : mouse kidney tissue, |
| | IF/ICC : Neuro-2a cells, |

Background Information

L1CAM, also known as NCAM-L1 or CD171, is a cell adhesion molecule of the immunoglobulin superfamily. It is a 200-220 kDa transmembrane glycoprotein composed of six Ig-like domains and five fibronectin type III repeats followed by a transmembrane region and a highly conserved cytoplasmic tail (PMID: 3412448; 22796939). L1CAM is primarily expressed in the nervous system and is involved in neuron-neuron adhesion, neurite fasciculation, outgrowth of neurites, cerebellar granule cell migration, neurite outgrowth on Schwann cells and interactions among epithelial cells of intestinal crypts (PMID: 3412448; 10767310).

Storage

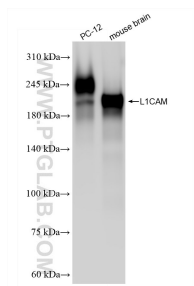
Storage:
Store at -20°C. Stable for one year after shipment.
Storage Buffer:
PBS with 0.02% sodium azide and 50% glycerol, pH7.3
Aliquoting is unnecessary for -20°C storage

*** 20ul sizes contain 0.1% BSA

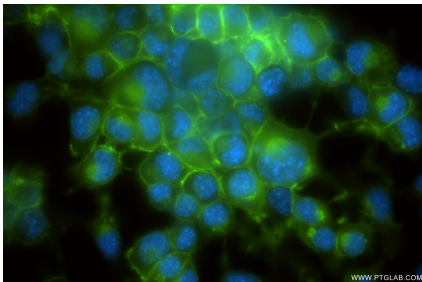
For technical support and original validation data for this product please contact:
T: 1 (888) 4PTGLAB (1-888-478-4522) (toll free in USA), or 1(312) 455-8498 (outside USA)
E: proteintech@ptglab.com
W: ptglab.com

This product is exclusively available under Proteintech Group brand and is not available to purchase from any other manufacturer.

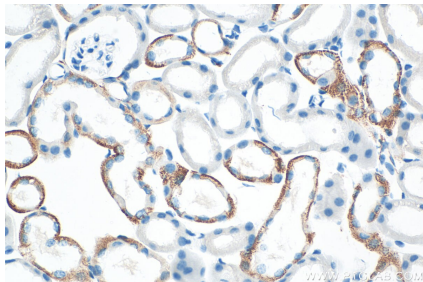
Selected Validation Data



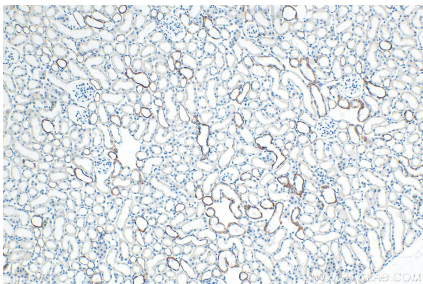
Various lysates were subjected to SDS PAGE followed by western blot with 86305-2-RR (L1CAM/CD171 antibody) at dilution of 1:20000 incubated at room temperature for 1.5 hours.



Immunofluorescent analysis of (4% PFA) fixed Neuro-2a cells using L1CAM/CD171 antibody (86305-2-RR, Clone: 250101C11) at dilution of 1:800 and CoraLite®488-Conjugated Goat Anti-Rabbit IgG(H+L) (SA00013-2).



Immunohistochemical analysis of paraffin-embedded mouse kidney tissue slide using 86305-2-RR (L1CAM/CD171 antibody) at dilution of 1:400 (under 40x lens). Heat mediated antigen retrieval with Tris-EDTA buffer (pH 9.0).



Immunohistochemical analysis of paraffin-embedded mouse kidney tissue slide using 86305-2-RR (L1CAM/CD171 antibody) at dilution of 1:400 (under 10x lens). Heat mediated antigen retrieval with Tris-EDTA buffer (pH 9.0).