

For Research Use Only

Mouse L1cam Recombinant monoclonal antibody, PBS Only (Detector)

Catalog Number: 86305-3-PBS



Basic Information

Catalog Number: 86305-3-PBS	GenBank Accession Number: N/A	Purification Method: Protein A purification
Size: 100ug , Concentration: 1 mg/ml by Nanodrop;	GeneID (NCBI): 16728	CloneNo.: 250101A12
Source: Rabbit	UNIPROT ID: P11627	
Isotype: IgG	Full Name: L1 cell adhesion molecule	
Immunogen Catalog Number: EG3022	Calculated MW: 141 kDa	

Applications

Tested Applications:
Cytometric bead array, Sandwich ELISA, Indirect ELISA

Species Specificity:
mouse

Product Information

86305-3-PBS targets L1cam as part of a matched antibody pair:

MP02352-1: 86305-2-PBS capture and 86305-3-PBS detection (validated in Cytometric bead array)

MP02352-2: 86305-4-PBS capture and 86305-3-PBS detection (validated in Sandwich ELISA)

Unconjugated rabbit recombinant monoclonal antibody in PBS only (BSA and azide free) storage buffer at a concentration of 1 mg/mL, ready for conjugation. Created using Proteintech's proprietary in-house recombinant technology. Recombinant production enables unrivalled batch-to-batch consistency, easy scale-up, and future security of supply.

This conjugation ready format makes antibodies ideal for use in many applications including: ELISAs, multiplex assays requiring matched pairs, mass cytometry, and multiplex imaging applications. Antibody use should be optimized by the end user for each application and assay.

Storage

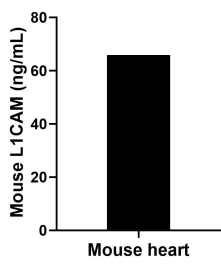
Storage:
Store at -80°C.

Storage Buffer:
PBS only, pH7.3

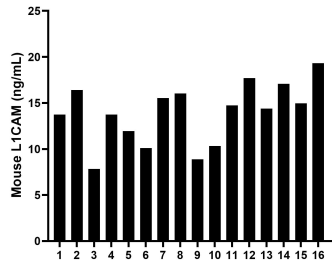
For technical support and original validation data for this product please contact:
T: 1 (888) 4PTGLAB (1-888-478-4522) (toll free in USA), or 1(312) 455-8498 (outside USA)
E: proteintech@ptglab.com
W: ptglab.com

This product is exclusively available under Proteintech Group brand and is not available to purchase from any other manufacturer.

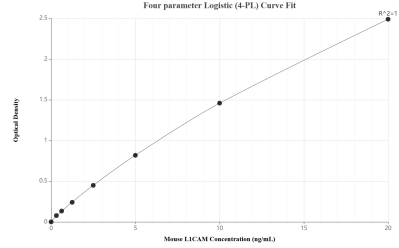
Selected Validation Data



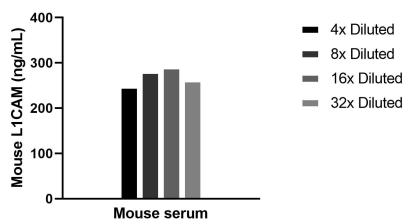
The mean L1CAM concentration was determined to be 65.90 ng/mL in mouse heart extract based on a 6.90 mg/mL extract load.



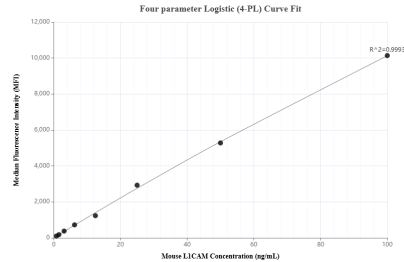
Serum of sixteen mice was measured. The L1CAM concentration of detected samples was determined to be 13.92 ng/mL with a range of 7.82-19.31 ng/mL



Sandwich ELISA standard curve of MP02352-2, Mouse L1CAM Recombinant Matched Antibody Pair - PBS only. 86305-4-PBS was coated to a plate as the capture antibody and incubated with serial dilutions of standard Eg3022. 86305-3-PBS was HRP conjugated as the detection antibody. Range: 0.313-20 ng/mL



The mean L1CAM concentration was determined to be 269.5 ng/mL in mouse serum.



Cytometric bead array standard curve of MP02352-1, MOUSE L1CAM Recombinant Matched Antibody Pair, PBS Only. Capture antibody: 86305-2-PBS. Detection antibody: 86305-3-PBS. Standard: Eg3022. Range: 0.781-100 ng/mL