

For Research Use Only

Phospho-Cofilin (Ser3) Recombinant monoclonal antibody, PBS Only

Catalog Number: 86307-1-PBS



Basic Information

Catalog Number: 86307-1-PBS	GenBank Accession Number: BC012318	Purification Method: Protein A purification
Size: 100ug, Concentration: 1 mg/ml by Nanodrop;	GeneID (NCBI): 1072	CloneNo.: 250986H5
Source: Rabbit	UNIPROT ID: P23528	
Isotype: IgG	Full Name: cofilin 1 (non-muscle)	
	Calculated MW: 18 kDa	
	Observed MW: 18 kDa	

Applications

Tested Applications:
WB, IF/ICC, Indirect ELISA

Species Specificity:
human, mouse

Background Information

Cofilin is a ubiquitous actin-binding protein required for the reorganization of actin filaments. It is a member of the ADF (actin-depolymerizing factor)/cofilin family that is a key regulator of actin dynamics and essential for cellular motility, cytokinesis, and endocytosis. Cofilin activity is tightly regulated by phosphorylation and dephosphorylation. Phosphorylation at Ser3 can inhibit its activity, also causing translocation from the nucleus to the cytoplasm.

Storage

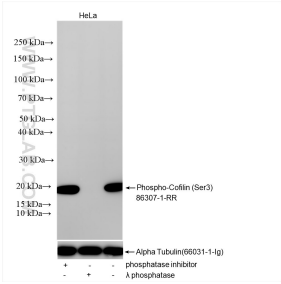
Storage:
Store at -80°C.

Storage Buffer:
PBS only, pH7.3

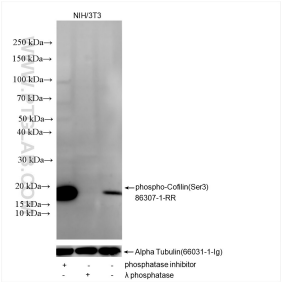
For technical support and original validation data for this product please contact:
T: 1 (888) 4PTGLAB (1-888-478-4522) (toll free in USA), or 1(312) 455-8498 (outside USA)
E: proteintech@ptglab.com
W: ptglab.com

This product is exclusively available under Proteintech Group brand and is not available to purchase from any other manufacturer.

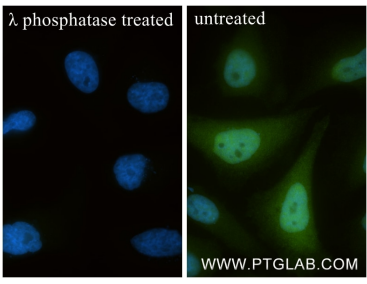
Selected Validation Data



Non-treated HeLa cells, phosphatase inhibitor treated HeLa cells and λ phosphatase treated HeLa cells were subjected to SDS PAGE followed by western blot with 86307-1-RR (Phospho-Cofilin (Ser3) antibody) at dilution of 1:5000 incubated at room temperature for 1.5 hours. The membrane was stripped and re-blotted with Alpha Tubulin (66031-1-Ig) antibody as a loading control. This data was developed using the same antibody clone with 86307-1-



Non-treated NIH/3T3 cells, phosphatase inhibitor treated NIH/3T3 cells and λ phosphatase treated NIH/3T3 cells were subjected to SDS PAGE followed by western blot with 86307-1-RR (Phospho-Cofilin (Ser3) antibody) at dilution of 1:5000 incubated at room temperature for 1.5 hours. The membrane was stripped and re-blotted with Alpha Tubulin (66031-1-Ig) antibody as a loading control. This data was developed using the same antibody clone with 86307-1-



Immunofluorescent analysis of (4% PFA) fixed λ phosphatase treated HeLa cells using Phospho-Cofilin (Ser3) antibody (86307-1-RR, Clone: 250986H5) at dilution of 1:400 and Coralite®488-Conjugated Goat Anti-Rabbit IgG(H+L) (SA00013-2). This data was developed using the same antibody clone with 86307-1-PBS in a different storage buffer formulation.