

For Research Use Only

# PPIL1 Recombinant antibody

Catalog Number: 86312-1-RR



## Basic Information

### Catalog Number:

86312-1-RR

### Size:

100ul, Concentration: 1000 µg/ml by Nanodrop;

### Source:

Rabbit

### Isotype:

IgG

### Immunogen Catalog Number:

AG7436

### GenBank Accession Number:

BC003048

### GeneID (NCBI):

51645

### UNIPROT ID:

Q9Y3C6

### Full Name:

peptidylprolyl isomerase (cyclophilin)-like 1

### Calculated MW:

18 kDa

### Observed MW:

18 kDa

### Purification Method:

Protein A purification

### CloneNo.:

250902G7

### Recommended Dilutions:

WB: 1:2000-1:10000

## Applications

### Tested Applications:

WB, ELISA

### Species Specificity:

human

### Positive Controls:

WB : HeLa cells, A375 cells, K-562 cells, human heart tissue

## Background Information

Peptidyl-prolyl isomerase (PPIase) catalyzes the interconversion of a specific Pro-imide bond between the cis and trans conformations. PPIL1 (Peptidyl-prolyl cis-trans isomerase-like 1) is up-regulated in human colon cancer cells and an siRNA-mediated knockdown of PPIL1 resulted in a reduced number of viable cell (PMID: 20368803). Expression of PPIL1 was shown to be ubiquitous across all adult tissues (with highest expression in the adrenal gland, testis and heart). PPIL1 is also known to participate in the spliceosome; a complex and dynamic protein and RNA complex responsible for splicing introns from pre-mRNA (PMID: 33220177, 8978786).

## Storage

### Storage:

Store at -20°C. Stable for one year after shipment.

### Storage Buffer:

PBS with 0.02% sodium azide and 50% glycerol, pH7.3

Aliquoting is unnecessary for -20°C storage

\*\*\* 20ul sizes contain 0.1% BSA

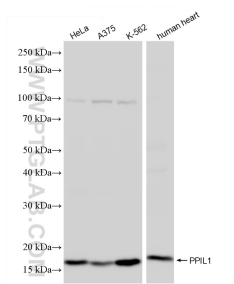
For technical support and original validation data for this product please contact:

T: 1 (888) 4PTGLAB (1-888-478-4522) (toll free in USA), or 1(312) 455-8498 (outside USA)

E: [proteintech@ptglab.com](mailto:proteintech@ptglab.com)  
W: [ptglab.com](http://ptglab.com)

This product is exclusively available under Proteintech Group brand and is not available to purchase from any other manufacturer.

## Selected Validation Data



Various lysates were subjected to SDS PAGE followed by western blot with 86312-1-RR (PPIL1 antibody) at dilution of 1:5000 incubated at room temperature for 1.5 hours.