

For Research Use Only

# PRPF31 Recombinant monoclonal antibody, PBS Only (Capture)

Catalog Number: 86315-1-PBS



## Basic Information

<b>Catalog Number:</b> 86315-1-PBS	<b>GenBank Accession Number:</b> NM_015629	<b>Purification Method:</b> Protein A purification
<b>Size:</b> 100ug , Concentration: 1 mg/ml by Nanodrop;	<b>GeneID (NCBI):</b> 26121	<b>CloneNo.:</b> 251005G5
<b>Source:</b> Rabbit	<b>UNIPROT ID:</b> Q8WWY3	
<b>Isotype:</b> IgG	<b>Full Name:</b> PRP31 pre-mRNA processing factor 31 homolog (S. cerevisiae)	
<b>Immunogen Catalog Number:</b> AG26716	<b>Calculated MW:</b> 55 kDa	
	<b>Observed MW:</b> 55-60 kDa	

## Applications

**Tested Applications:**  
WB, Sandwich ELISA, Indirect ELISA

**Species Specificity:**  
human, mouse

## Product Information

86315-1-PBS targets PRPF31 as part of a matched antibody pair:

MP02586-1: 86315-1-PBS capture and 86315-3-PBS detection (validated in Sandwich ELISA)

Unconjugated rabbit recombinant monoclonal antibody in PBS only (BSA and azide free) storage buffer at a concentration of 1 mg/mL, ready for conjugation. Created using Proteintech's proprietary in-house recombinant technology. Recombinant production enables unrivalled batch-to-batch consistency, easy scale-up, and future security of supply.

This conjugation ready format makes antibodies ideal for use in many applications including: ELISAs, multiplex assays requiring matched pairs, mass cytometry, and multiplex imaging applications. Antibody use should be optimized by the end user for each application and assay.

## Background Information

PRPF31 is a component of the spliceosome complex. It is recruited to introns following the attachment of U4 and U6 RNAs and the 15.5K protein. The addition of PRPF31 is crucial for the transition of the spliceosomal complex to the activated state.

## Storage

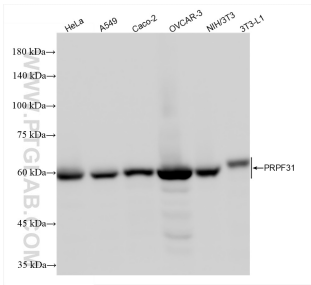
**Storage:**  
Store at -80°C.

**Storage Buffer:**  
PBS only, pH7.3

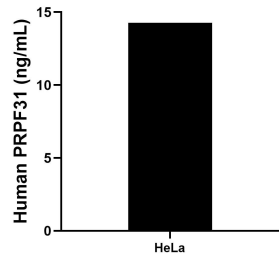
For technical support and original validation data for this product please contact:  
T: 1 (888) 4PTGLAB (1-888-478-4522) (toll free in USA), or 1(312) 455-8498 (outside USA)  
E: [proteintech@ptglab.com](mailto:proteintech@ptglab.com)  
W: [ptglab.com](http://ptglab.com)

This product is exclusively available under Proteintech Group brand and is not available to purchase from any other manufacturer.

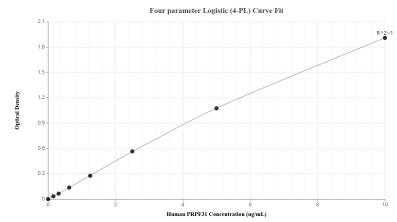
## Selected Validation Data



Various lysates were subjected to SDS PAGE followed by western blot with 86315-1-RR (PRPF31 antibody) at dilution of 1:10000 incubated at room temperature for 1.5 hours. This data was developed using the same antibody clone with 86315-1-PBS in a different storage buffer formulation.



The mean PRPF31 concentration was determined to be 14.26 ng/mL in HeLa cell extract based on a 1.10 mg/mL extract load.



Sandwich ELISA standard curve of MP02586-1, Human PRPF31 Recombinant Matched Antibody Pair - PBS only. 86315-1-PBS was coated to a plate as the capture antibody and incubated with serial dilutions of standard Ag26716. 86315-3-PBS was HRP conjugated as the detection antibody. Range: 0.156-10 ng/mL.