

For Research Use Only

PRPF31 Recombinant antibody, PBS Only

Catalog Number: 86315-2-PBS



Basic Information

Catalog Number:

86315-2-PBS

Size:

100ug , Concentration: 1 mg/ml by Nanodrop;

Source:

Rabbit

Isotype:

IgG

Immunogen Catalog Number:

AG26716

GenBank Accession Number:

NM_015629

GeneID (NCBI):

26121

UNIPROT ID:

Q8WWY3

Full Name:

PRP31 pre-mRNA processing factor 31 homolog (S. cerevisiae)

Calculated MW:

55 kDa

Observed MW:

55-60 kDa

Purification Method:

Protein A purification

CloneNo.:

251005H8

Applications

Tested Applications:

WB, IF/ICC, Indirect ELISA

Species Specificity:

human

Background Information

PRPF31 is a component of the spliceosome complex. It is recruited to introns following the attachment of U4 and U6 RNAs and the 15.5K protein. The addition of PRPF31 is crucial for the transition of the spliceosomal complex to the activated state.

Storage

Storage:

Store at -80°C.

Storage Buffer:

PBS only, pH7.3

For technical support and original validation data for this product please contact:

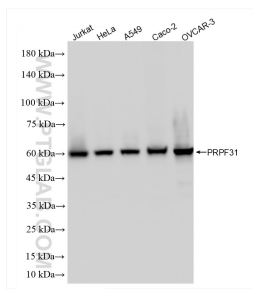
T: 1 (888) 4PTGLAB (1-888-478-4522) (toll free in USA), or 1(312) 455-8498 (outside USA)

E: proteintech@ptglab.com

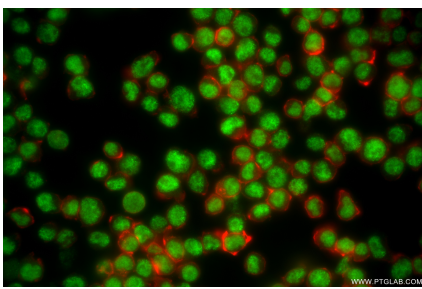
W: ptglab.com

This product is exclusively available under Proteintech Group brand and is not available to purchase from any other manufacturer.

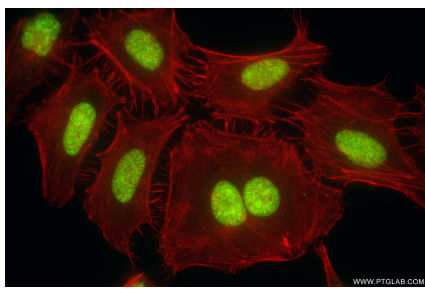
Selected Validation Data



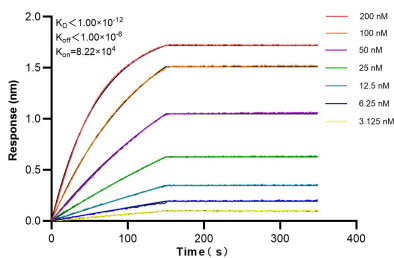
Various lysates were subjected to SDS PAGE followed by western blot with 86315-2-RR (PRPF31 antibody) at dilution of 1:10000 incubated at room temperature for 1.5 hours. This data was developed using the same antibody clone with 86315-2-PBS in a different storage buffer formulation.



Immunofluorescent analysis of (4% PFA) fixed Jurkat cells using PRPF31 antibody (86315-2-RR, Clone: 251005H8) at dilution of 1:500 and CoraLite®488-Conjugated Goat Anti-Rabbit IgG(H+L) (SA00013-2), CL594-Phalloidin (red). This data was developed using the same antibody clone with 86315-2-PBS in a different storage buffer formulation.



Immunofluorescent analysis of (4% PFA) fixed HeLa cells using PRPF31 antibody (86315-2-RR, Clone: 251005H8) at dilution of 1:500 and CoraLite®488-Conjugated Goat Anti-Rabbit IgG(H+L) (SA00013-2), CL594-Phalloidin (red). This data was developed using the same antibody clone with 86315-2-PBS in a different storage buffer formulation.



Biolayer interferometry (BLI) kinetic assays of 86315-2-RR against Human PRPF31 were performed. The affinity constant is below 1 pM.