

For Research Use Only

PRPF31 Recombinant antibody

Catalog Number: 86315-2-RR



Basic Information

Catalog Number: 86315-2-RR	GenBank Accession Number: NM_015629	Purification Method: Protein A purification
Size: 100ul , Concentration: 1000 µg/ml by Nanodrop;	GeneID (NCBI): 26121	CloneNo.: 251005H8
Source: Rabbit	UNIPROT ID: Q8WWY3	Recommended Dilutions: WB: 1:5000-1:50000 IF/ICC: 1:250-1:1000
Isotype: IgG	Full Name: PRP31 pre-mRNA processing factor 31 homolog (S. cerevisiae)	
Immunogen Catalog Number: AG26716	Calculated MW: 55 kDa	
	Observed MW: 55-60 kDa	

Applications

Tested Applications: WB, IF/ICC, ELISA	Positive Controls:
Species Specificity: human	WB : Jurkat cells, HeLa cells, A549 cells, Caco-2 cells, OVCAR-3 cells IF/ICC : Jurkat cells, HeLa cells

Background Information

PRPF31 is a component of the spliceosome complex. It is recruited to introns following the attachment of U4 and U6 RNAs and the 15.5K protein. The addition of PRPF31 is crucial for the transition of the spliceosomal complex to the activated state.

Storage

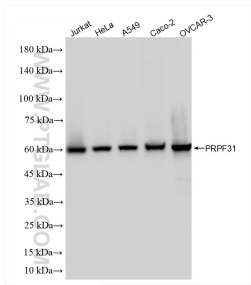
Storage:
Store at -20°C. Stable for one year after shipment.
Storage Buffer:
PBS with 0.02% sodium azide and 50% glycerol, pH7.3
Aliquoting is unnecessary for -20°C storage

*** 20ul sizes contain 0.1% BSA

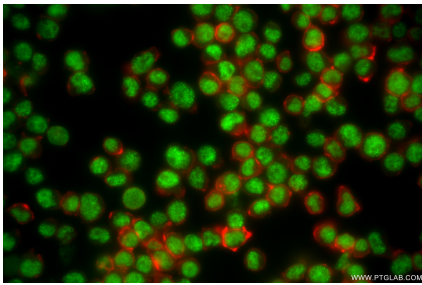
For technical support and original validation data for this product please contact:
T: 1 (888) 4PTGLAB (1-888-478-4522) (toll free in USA), or 1(312) 455-8498 (outside USA)
E: proteintech@ptglab.com
W: ptglab.com

This product is exclusively available under Proteintech Group brand and is not available to purchase from any other manufacturer.

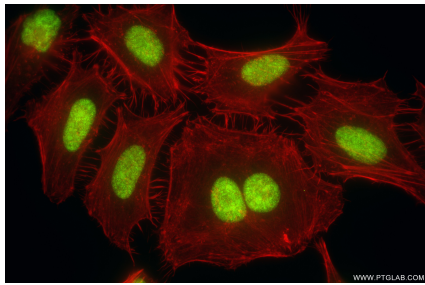
Selected Validation Data



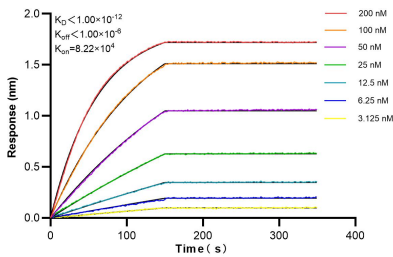
Various lysates were subjected to SDS PAGE followed by western blot with 86315-2-RR (PRPF31 antibody) at dilution of 1:10000 incubated at room temperature for 1.5 hours.



Immunofluorescent analysis of (4% PFA) fixed Jurkat cells using PRPF31 antibody (86315-2-RR, Clone: 251005H8) at dilution of 1:500 and CoraLite®488-Conjugated Goat Anti-Rabbit IgG(H+L) (SA00013-2), CL594-Phalloidin (red).



Immunofluorescent analysis of (4% PFA) fixed HeLa cells using PRPF31 antibody (86315-2-RR, Clone: 251005H8) at dilution of 1:500 and CoraLite®488-Conjugated Goat Anti-Rabbit IgG(H+L) (SA00013-2), CL594-Phalloidin (red).



Biolayer interferometry (BLI) kinetic assays of 86315-2-RR against Human PRPF31 were performed. The affinity constant is below 1 pM.