

For Research Use Only

IL20RA Recombinant monoclonal antibody, PBS Only (Detector)

Catalog Number: 86316-3-PBS



Basic Information

Catalog Number: 86316-3-PBS	GenBank Accession Number: NM_014432	Purification Method: Protein A purification
Size: 100ug , Concentration: 1 mg/ml by Nanodrop;	GeneID (NCBI): 53832	CloneNo.: 250321B5
Source: Rabbit	UNIPROT ID: Q9UHF4-1	
Isotype: IgG	Full Name: interleukin 20 receptor, alpha	
Immunogen Catalog Number: EG2780	Calculated MW: 62 kDa	

Applications

Tested Applications:
Sandwich ELISA, Indirect ELISA

Species Specificity:
human

Product Information

86316-3-PBS targets IL20RA as part of a matched antibody pair:

MP02657-1: 86316-4-PBS capture and 86316-3-PBS detection (validated in Sandwich ELISA)

Unconjugated rabbit recombinant monoclonal antibody in PBS only (BSA and azide free) storage buffer at a concentration of 1 mg/mL, ready for conjugation. Created using Proteintech's proprietary in-house recombinant technology. Recombinant production enables unrivalled batch-to-batch consistency, easy scale-up, and future security of supply.

This conjugation ready format makes antibodies ideal for use in many applications including: ELISAs, multiplex assays requiring matched pairs, mass cytometry, and multiplex imaging applications. Antibody use should be optimized by the end user for each application and assay.

Storage

Storage:
Store at -80°C.

Storage Buffer:
PBS only, pH7.3

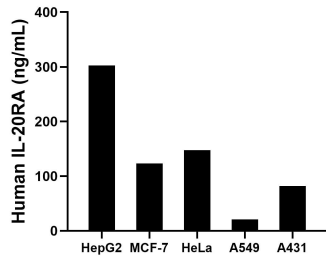
For technical support and original validation data for this product please contact:

T: 1 (888) 4PTGLAB (1-888-478-4522) (toll free in USA), or 1(312) 455-8498 (outside USA)

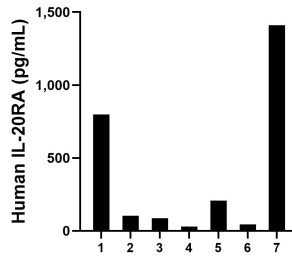
E: proteintech@ptglab.com
W: ptglab.com

This product is exclusively available under Proteintech Group brand and is not available to purchase from any other manufacturer.

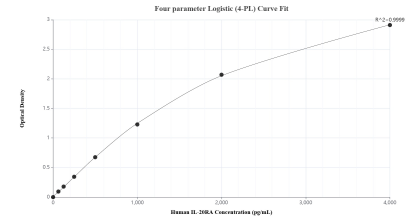
Selected Validation Data



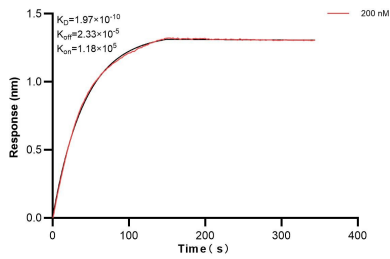
The mean IL-20RA concentration was determined to be 302.5 ng/mL in HepG2 cell extract based on a 1.2 mg/mL extract load, 123.4 ng/mL in MCF-7 cell extract based on a 1.2 mg/mL extract load, 147.6 ng/mL in HeLa cell extract based on a 1.2 mg/mL extract load, 21.1 ng/mL in A549 cell extract based on a 1.1 mg/mL extract load and 81.6 ng/mL in A431 cell extract based on a 1.5 mg/mL extract load.



Plasma of seven individual healthy human donors was measured. The IL-20RA concentration of detected samples was determined to be 383.0 pg/mL with a range of 29.6-1,410.8 pg/mL.



Sandwich ELISA standard curve of MP02657-1, Human IL-20RA Recombinant Matched Antibody Pair - PBS only. 86316-4-PBS was coated to a plate as the capture antibody and incubated with serial dilutions of standard Eg2780. 86316-3-PBS was HRP conjugated as the detection antibody. Range: 62.5-4000 pg/mL.



Biolayer interferometry (BLI) kinetic assay of 86316-3-PBS against Human IL20RA was performed. The affinity constant is 0.197 nM.