

For Research Use Only

# IL20RA Recombinant monoclonal antibody, PBS Only (Capture)

Catalog Number: 86316-4-PBS



## Basic Information

<b>Catalog Number:</b> 86316-4-PBS	<b>GenBank Accession Number:</b> NM_014432	<b>Purification Method:</b> Protein A purification
<b>Size:</b> 100ug , Concentration: 1 mg/ml by Nanodrop;	<b>GeneID (NCBI):</b> 53832	<b>CloneNo.:</b> 250321C3
<b>Source:</b> Rabbit	<b>UNIPROT ID:</b> Q9UHF4-1	
<b>Isotype:</b> IgG	<b>Full Name:</b> interleukin 20 receptor, alpha	
<b>Immunogen Catalog Number:</b> EG2780	<b>Calculated MW:</b> 62 kDa	

## Applications

**Tested Applications:**  
Sandwich ELISA, Indirect ELISA

**Species Specificity:**  
human

## Product Information

86316-4-PBS targets IL20RA as part of a matched antibody pair:

MP02657-1: 86316-4-PBS capture and 86316-3-PBS detection (validated in Sandwich ELISA)

Unconjugated rabbit recombinant monoclonal antibody in PBS only (BSA and azide free) storage buffer at a concentration of 1 mg/mL, ready for conjugation. Created using Proteintech's proprietary in-house recombinant technology. Recombinant production enables unrivalled batch-to-batch consistency, easy scale-up, and future security of supply.

This conjugation ready format makes antibodies ideal for use in many applications including: ELISAs, multiplex assays requiring matched pairs, mass cytometry, and multiplex imaging applications. Antibody use should be optimized by the end user for each application and assay.

## Storage

**Storage:**  
Store at -80°C.

**Storage Buffer:**  
PBS only, pH7.3

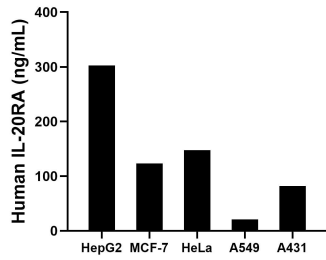
For technical support and original validation data for this product please contact:

T: 1 (888) 4PTGLAB (1-888-478-4522) (toll free in USA), or 1(312) 455-8498 (outside USA)

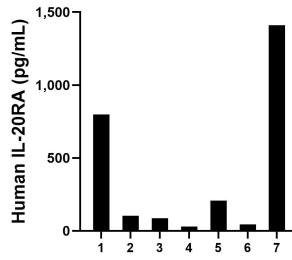
E: [proteintech@ptglab.com](mailto:proteintech@ptglab.com)  
W: [ptglab.com](http://ptglab.com)

**This product is exclusively available under Proteintech Group brand and is not available to purchase from any other manufacturer.**

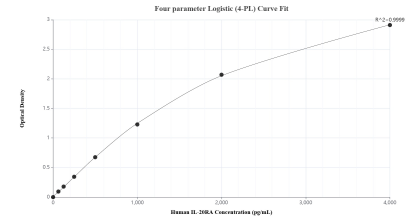
## Selected Validation Data



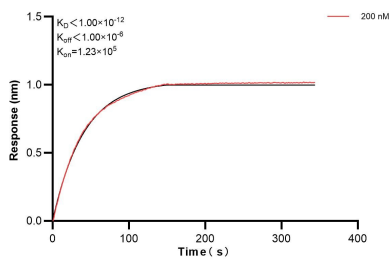
The mean IL-20RA concentration was determined to be 302.5 ng/mL in HepG2 cell extract based on a 1.2 mg/mL extract load, 123.4 ng/mL in MCF-7 cell extract based on a 1.2 mg/mL extract load, 147.6 ng/mL in HeLa cell extract based on a 1.2 mg/mL extract load, 21.1 ng/mL in A549 cell extract based on a 1.1 mg/mL extract load and 81.6 ng/mL in A431 cell extract based on a 1.5 mg/mL extract load.



Plasma of seven individual healthy human donors was measured. The IL-20RA concentration of detected samples was determined to be 383.0 pg/mL with a range of 29.6-1,410.8 pg/mL.



Sandwich ELISA standard curve of MP02657-1, Human IL-20RA Recombinant Matched Antibody Pair - PBS only. 86316-4-PBS was coated to a plate as the capture antibody and incubated with serial dilutions of standard Eg2780. 86316-3-PBS was HRP conjugated as the detection antibody. Range: 62.5-4000 pg/mL.



Biolayer interferometry (BLI) kinetic assay of 86316-4-PBS against Human IL20RA was performed. The affinity constant is below 1 pM.