

For Research Use Only

RPS15 Recombinant antibody, PBS Only

Catalog Number: 86318-2-PBS



Basic Information

Catalog Number: 86318-2-PBS	GenBank Accession Number: BC064908	Purification Method: Protein A purification
Size: 100ug, Concentration: 1 mg/ml by Nanodrop;	GeneID (NCBI): 6209	CloneNo.: 251009B9
Source: Rabbit	UNIPROT ID: P62841	
Isotype: IgG	Full Name: ribosomal protein S15	
Immunogen Catalog Number: AG6795	Calculated MW: 17 kDa	
	Observed MW: 17 kDa	

Applications

Tested Applications:
WB, Indirect ELISA
Species Specificity:
human, mouse, rat

Background Information

RPS15, also named as RIG protein or Small ribosomal subunit protein uS19, is a 145 amino acid protein, which belongs to the universal ribosomal protein uS19 family. RPS15 is a ribosomal small subunit assembly and involved in nuclear-transcribed mRNA catabolic process, nonsense-mediated decay.

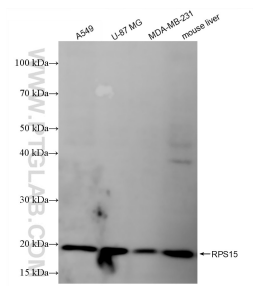
Storage

Storage:
Store at -80°C.
Storage Buffer:
PBS only, pH7.3

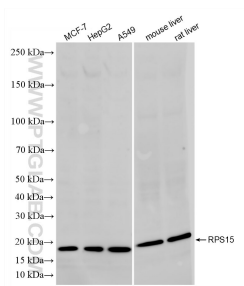
For technical support and original validation data for this product please contact:
T: 1 (888) 4PTGLAB (1-888-478-4522) (toll free in USA), or 1(312) 455-8498 (outside USA)
E: proteintech@ptglab.com
W: ptglab.com

This product is exclusively available under Proteintech Group brand and is not available to purchase from any other manufacturer.

Selected Validation Data



Various lysates were subjected to SDS PAGE followed by western blot with 86318-2-RR (RPS15 antibody) at dilution of 1:10000 incubated at room temperature for 1.5 hours. This data was developed using the same antibody clone with 86318-2-PBS in a different storage buffer formulation.



Various lysates were subjected to SDS PAGE followed by western blot with 86318-2-RR (RPS15 antibody) at dilution of 1:2000 incubated at room temperature for 1.5 hours. This data was developed using the same antibody clone with 86318-2-PBS in a different storage buffer formulation.