

For Research Use Only

RPS15 Recombinant antibody

Catalog Number: 86318-2-RR



Basic Information

Catalog Number:

86318-2-RR

Size:

100ul, Concentration: 1000 µg/ml by Nanodrop;

Source:

Rabbit

Isotype:

IgG

Immunogen Catalog Number:

AG6795

GenBank Accession Number:

BC064908

GeneID (NCBI):

6209

UNIPROT ID:

P62841

Full Name:

ribosomal protein S15

Calculated MW:

17 kDa

Observed MW:

17 kDa

Purification Method:

Protein A purification

CloneNo.:

251009B9

Recommended Dilutions:

WB: 1:5000-1:50000

Applications

Tested Applications:

WB, ELISA

Species Specificity:

human, mouse, rat

Positive Controls:

WB : A549 cells, MCF-7 cells, U-87 MG cells, MDA-MB-231 cells, mouse liver tissue, HepG2 cells, rat liver tissue

Background Information

RPS15, also named as RIG protein or Small ribosomal subunit protein uS19, is a 145 amino acid protein, which belongs to the universal ribosomal protein uS19 family. RPS15 is a ribosomal small subunit assembly and involved in nuclear-transcribed mRNA catabolic process, nonsense-mediated decay.

Storage

Storage:

Store at -20°C. Stable for one year after shipment.

Storage Buffer:

PBS with 0.02% sodium azide and 50% glycerol, pH7.3

Aliquoting is unnecessary for -20°C storage

*** 20ul sizes contain 0.1% BSA

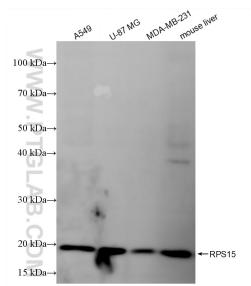
For technical support and original validation data for this product please contact:

T: 1 (888) 4PTGLAB (1-888-478-4522) (toll free in USA), or 1(312) 455-8498 (outside USA)

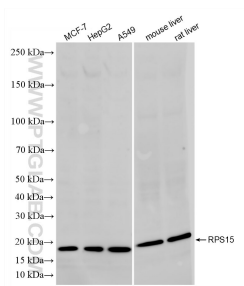
E: proteintech@ptglab.com
W: ptglab.com

This product is exclusively available under Proteintech Group brand and is not available to purchase from any other manufacturer.

Selected Validation Data



Various lysates were subjected to SDS PAGE followed by western blot with 86318-2-RR (RPS15 antibody) at dilution of 1:10000 incubated at room temperature for 1.5 hours.



Various lysates were subjected to SDS PAGE followed by western blot with 86318-2-RR (RPS15 antibody) at dilution of 1:2000 incubated at room temperature for 1.5 hours.