

For Research Use Only

Cytokeratin 10 Recombinant monoclonal antibody, PBS Only

Catalog Number: 86324-1-PBS



Basic Information

Catalog Number:

86324-1-PBS

Size:

100ug , Concentration: 1 mg/ml by Nanodrop;

Source:

Rabbit

Isotype:

IgG

GenBank Accession Number:

BC034697

GeneID (NCBI):

3858

UNIPROT ID:

P13645

Full Name:

keratin 10

Calculated MW:

584 aa, 59 kDa

Observed MW:

59 kDa

Purification Method:

Protein A purification

CloneNo.:

250893H2

Applications

Tested Applications:

WB, IHC, IF-P, Indirect ELISA

Species Specificity:

human, mouse, rat

Background Information

Cytokeratin 10 (CK-10, K10, KRT10) is a type I (acidic) cytokeratin and part of the intermediate filament protein superfamily. It is expressed in keratinized stratified epithelium, suprabasal cell layers (including the stratum corneum), and differentiated areas of highly differentiated squamous cell carcinomas. CK-10 plays a role in maintaining the structural integrity of epithelial cells and is involved in differentiation, tissue specialization, and epidermal barrier establishment. Mutations in the KRT10 gene are associated with epidermolytic hyperkeratosis, and its expression is linked to the terminal differentiation of epidermal cells. CK-10 is also used as a marker for tissue differentiation and characterization of malignant tumors in surgical pathology.

Storage

Storage:

Store at -80°C.

Storage Buffer:

PBS only, pH7.3

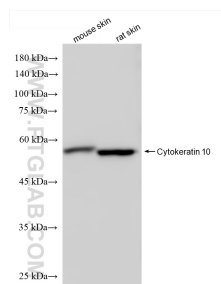
For technical support and original validation data for this product please contact:

T: 1 (888) 4PTGLAB (1-888-478-4522) (toll free in USA), or 1(312) 455-8498 (outside USA)

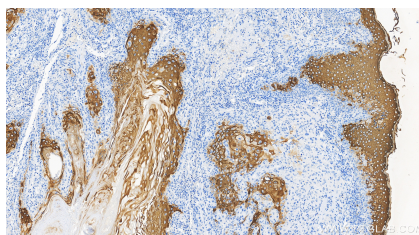
E: proteintech@ptglab.com
W: ptglab.com

This product is exclusively available under Proteintech Group brand and is not available to purchase from any other manufacturer.

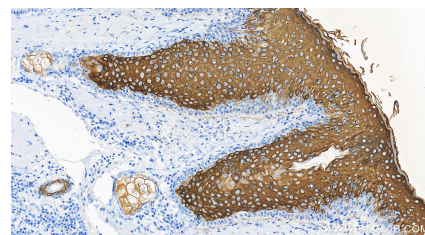
Selected Validation Data



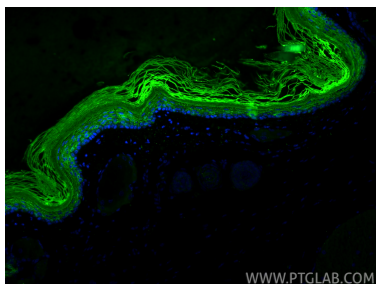
Various lysates were subjected to SDS PAGE followed by western blot with 86324-1-RR (KRT10 antibody) at dilution of 1:10000 incubated at room temperature for 1.5 hours. This data was developed using the same antibody clone with 86324-1-PBS in a different storage buffer formulation.



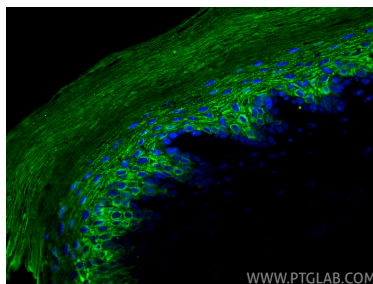
Immunohistochemical analysis of paraffin-embedded human skin cancer tissue slide using 86324-1-RR (Cytokeratin 10 antibody) at dilution of 1:1000 (under 20x lens). Heat mediated antigen retrieval with Tris-EDTA buffer (pH 9.0). This data was developed using the same antibody clone with 86324-1-PBS in a different storage buffer formulation.



Immunohistochemical analysis of paraffin-embedded human skin cancer tissue slide using 86324-1-RR (Cytokeratin 10 antibody) at dilution of 1:1000 (under 20x lens). Heat mediated antigen retrieval with Tris-EDTA buffer (pH 9.0). This data was developed using the same antibody clone with 86324-1-PBS in a different storage buffer formulation.



Immunofluorescent analysis of (4% PFA) fixed paraffin-embedded mouse skin tissue using Cytokeratin 10 antibody (86324-1-RR, Clone: 250893H2) at dilution of 1:200 and CoraLite® 488-Conjugated Goat Anti-Rabbit IgG(H+L) (SA00013-2). Heat mediated antigen retrieval with Tris-EDTA buffer (pH 9.0). This data was developed using the same antibody clone with 86324-1-PBS in a different storage buffer formulation.



Immunofluorescent analysis of (4% PFA) fixed paraffin-embedded mouse skin tissue using Cytokeratin 10 antibody (86324-1-RR, Clone: 250893H2) at dilution of 1:200 and CoraLite® 488-Conjugated Goat Anti-Rabbit IgG(H+L) (SA00013-2). Heat mediated antigen retrieval with Tris-EDTA buffer (pH 9.0). This data was developed using the same antibody clone with 86324-1-PBS in a different storage buffer formulation.