

Mouse CD39/ENTPD1 Recombinant antibody, PBS Only (Detector)

Catalog Number: 86327-1-PBS

Basic Information

Catalog Number: 86327-1-PBS	GenBank Accession Number: NM_009848.4	Purification Method: Protein A purification
Size: 100ug , Concentration: 1 mg/ml by Nanodrop;	GeneID (NCBI): 12495	CloneNo.: 25076485
Source: Rabbit	UNIPROT ID: P55772	
Isotype: IgG	Full Name: ectonucleoside triphosphate diphosphohydrolase 1	
Immunogen Catalog Number: EG3483	Calculated MW: 57 kDa	
	Observed MW: 75 kDa	

Applications

Tested Applications:
WB, Sandwich ELISA, Indirect ELISA, Sample test

Species Specificity:
mouse

Product Information

86327-1-PBS targets CD39/ENTPD1 as part of a matched antibody pair:

MP02378-2: 86327-4-PBS capture and 86327-1-PBS detection (validated in Sandwich ELISA)

Unconjugated rabbit recombinant monoclonal antibody in PBS only (BSA and azide free) storage buffer at a concentration of 1 mg/mL, ready for conjugation. Created using Proteintech's proprietary in-house recombinant technology. Recombinant production enables unrivalled batch-to-batch consistency, easy scale-up, and future security of supply.

This conjugation ready format makes antibodies ideal for use in many applications including: ELISAs, multiplex assays requiring matched pairs, mass cytometry, and multiplex imaging applications. Antibody use should be optimized by the end user for each application and assay.

Background Information

ENTPD1 (Ectonucleoside triphosphate diphosphohydrolase 1) is also named CD39, NTPDase 1, and Ecto-ATPDase 1 and belongs to the GDA1/CD39 NTPase family. In the nervous system, it can hydrolyze ATP and other nucleotides to regulate purinergic neurotransmission. It is a noncovalent tetrameric protein and detergent inhibition of enzymatic activity is caused by dissociation of ectoapyrase tetramers into monomers (PMID: 9733785). And it is a 70- to 100-kDa protein that is heavily N-glycosylated (PMID: 7930580). This protein has 6 glycosylation sites and 3 isoforms (58 kDa, 59 kDa, and 34 kDa) produced by alternative splicing.

Storage

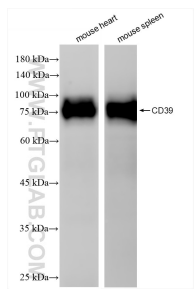
Storage:
Store at -80°C.

Storage Buffer:
PBS only, pH7.3

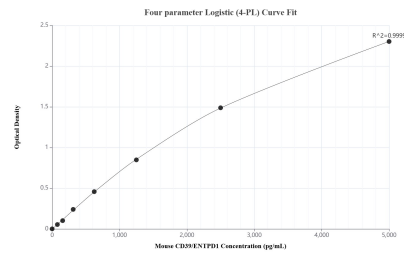
For technical support and original validation data for this product please contact:
T: 1 (888) 4PTGLAB (1-888-478-4522) (toll free in USA), or 1(312) 455-8498 (outside USA)
E: proteintech@ptglab.com
W: ptglab.com

This product is exclusively available under Proteintech Group brand and is not available to purchase from any other manufacturer.

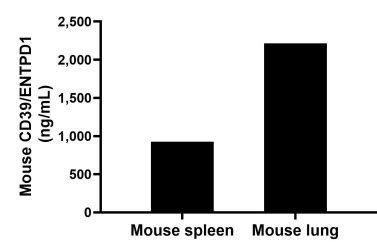
Selected Validation Data



Various lysates were subjected to SDS PAGE followed by western blot with 86327-1-RR (CD39 antibody) at dilution of 1:10000 incubated at room temperature for 1.5 hours. This data was developed using the same antibody clone with 86327-1-PBS in a different storage buffer formulation.



Sandwich ELISA standard curve of MP02378-2, Mouse CD39/ENTPD1 Recombinant Matched Antibody Pair - PBS only. 86327-4-PBS was coated to a plate as the capture antibody and incubated with serial dilutions of standard Eg3483. 86327-1-PBS was HRP conjugated as the detection antibody. Range: 78.1-5000 pg/mL



The mean CD39/ENTPD1 concentration was determined to be 926.3 ng/mL in mouse spleen extract based on a 8.5 mg/mL extract load and 2,212.6 ng/mL in mouse lung extract based on a 5.9 mg/mL extract load.