

# CD107a / LAMP1 Recombinant monoclonal antibody

Catalog Number: 86337-2-RR

## Basic Information

<b>Catalog Number:</b> 86337-2-RR	<b>GenBank Accession Number:</b> NM_010684.3	<b>Purification Method:</b> Protein A purification
<b>Size:</b> 100ul, Concentration: 1000 µg/ml by Nanodrop;	<b>GeneID (NCBI):</b> 16783	<b>CloneNo.:</b> 250972C12
<b>Source:</b> Rabbit	<b>UNIPROT ID:</b> P11438	<b>Recommended Dilutions:</b> WB: 1:1000-1:6000 IF-P: 1:50-1:500 IF/ICC: 1:250-1:1000
<b>Isotype:</b> IgG	<b>Full Name:</b> lysosomal-associated membrane protein 1	
<b>Immunogen Catalog Number:</b> EG3858	<b>Calculated MW:</b> 44 kDa	
	<b>Observed MW:</b> 90-120 kDa	

## Applications

<b>Tested Applications:</b> WB, IF/ICC, IF-P, ELISA	<b>Positive Controls:</b>
<b>Species Specificity:</b> mouse	<b>WB :</b> Neuro-2a cells, NIH/3T3 cells, EL-4 cells, mouse thymus tissue, mouse small intestine cells
	<b>IF-P :</b> mouse liver tissue,
	<b>IF/ICC :</b> C2C12 cells, NIH/3T3 cells

## Background Information

LAMP1 (CD107a) is a heavily glycosylated membrane protein enriched in the lysosomal membrane. LAMP1 is extensively glycosylated with asparagine-linked oligosaccharides which protect it from intracellular proteolysis (PMID: 10521503). Although LAMP1 is expressed largely in the endosome-lysosomal membrane of cells, it is also found on the plasma membrane (PMID: 16168398). Elevated LAMP1 expression at the cell surface has also been detected during platelet and granulocytic cell activation, as well as in some tumor cells (PMID: 29085473). LAMP1 functions to provide selectins with carbohydrate ligands. This protein has also been shown to be a marker of degranulation on lymphocytes such as CD8+ and NK cells and may also play a role in tumor cell differentiation and metastasis (PMID: 18835598; 29085473; 9426697).

## Storage

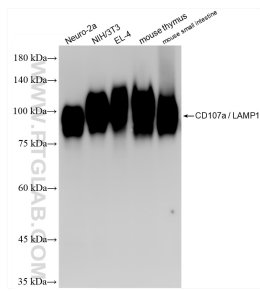
**Storage:**  
Store at -20°C. Stable for one year after shipment.  
**Storage Buffer:**  
PBS with 0.02% sodium azide and 50% glycerol, pH7.3  
 Aliquoting is unnecessary for -20°C storage

\*\*\* 20ul sizes contain 0.1% BSA

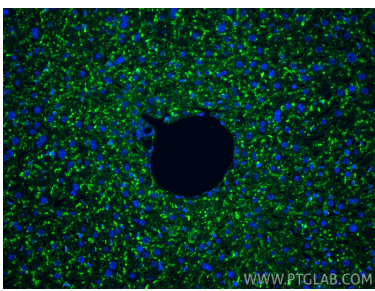
For technical support and original validation data for this product please contact:  
 T: 1 (888) 4PTGLAB (1-888-478-4522) (toll free in USA), or 1(312) 455-8498 (outside USA)  
 E: [proteintech@ptglab.com](mailto:proteintech@ptglab.com)  
 W: [ptglab.com](http://ptglab.com)

This product is exclusively available under Proteintech Group brand and is not available to purchase from any other manufacturer.

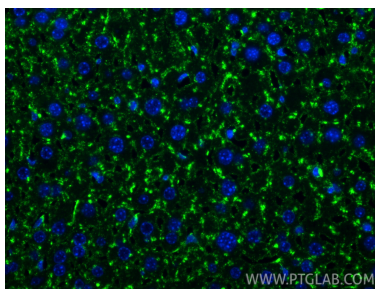
Selected Validation Data



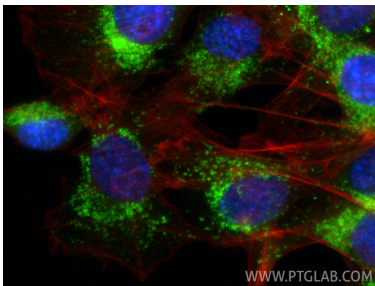
Various lysates were subjected to SDS PAGE followed by western blot with 86337-2-RR (LAMP-1/CD107a antibody) at dilution of 1:3000 incubated at room temperature for 1.5 hours.



Immunofluorescent analysis of (4% PFA) fixed paraffin-embedded mouse liver tissue using CD107a / LAMP1 antibody (86337-2-RR, Clone: 250972C12 ) at dilution of 1:200 and CoraLite®488-Conjugated Goat Anti-Rabbit IgG(H+L) (SA00013-2). Heat mediated antigen retrieval with Tris-EDTA buffer (pH 9.0).



Immunofluorescent analysis of (4% PFA) fixed paraffin-embedded mouse liver tissue using CD107a / LAMP1 antibody (86337-2-RR, Clone: 250972C12 ) at dilution of 1:200 and CoraLite®488-Conjugated Goat Anti-Rabbit IgG(H+L) (SA00013-2). Heat mediated antigen retrieval with Tris-EDTA buffer (pH 9.0).



Immunofluorescent analysis of (4% PFA) fixed C2C12 cells using CD107a / LAMP1 antibody (86337-2-RR, Clone: 250972C12 ) at dilution of 1:500 and CoraLite®488-Conjugated Goat Anti-Rabbit IgG(H+L) (SA00013-2), CL594-phalloidin (red).