

For Research Use Only

# Mouse Ccl11 Recombinant antibody, PBS Only (Capture)

Catalog Number:86339-2-PBS



## Basic Information

<b>Catalog Number:</b> 86339-2-PBS	<b>GenBank Accession Number:</b> NML_011330	<b>Purification Method:</b> Protein A purification
<b>Size:</b> 100ug , Concentration: 1 mg/ml by Nanodrop;	<b>GeneID (NCBI):</b> 20292	<b>CloneNo.:</b> 243012F8
<b>Source:</b> Rabbit	<b>UNIPROT ID:</b> P48298	
<b>Isotype:</b> IgG	<b>Full Name:</b> chemokine (C-C motif) ligand 11	
<b>Immunogen Catalog Number:</b> EG2400	<b>Calculated MW:</b> 11kd	

## Applications

**Tested Applications:**  
Sandwich ELISA, Indirect ELISA, Sample test

**Species Specificity:**  
mouse

## Product Information

86339-2-PBS targets Ccl11 as part of a matched antibody pair:

MP02367-1: 86339-2-PBS capture and 86339-1-PBS detection (validated in Sandwich ELISA)

Unconjugated rabbit recombinant monoclonal antibody in PBS only (BSA and azide free) storage buffer at a concentration of 1 mg/mL, ready for conjugation. Created using Proteintech's proprietary in-house recombinant technology. Recombinant production enables unrivalled batch-to-batch consistency, easy scale-up, and future security of supply.

This conjugation ready format makes antibodies ideal for use in many applications including: ELISAs, multiplex assays requiring matched pairs, mass cytometry, and multiplex imaging applications. Antibody use should be optimized by the end user for each application and assay.

## Storage

**Storage:**  
Store at -80°C.  
**Storage Buffer:**  
PBS only, pH7.3

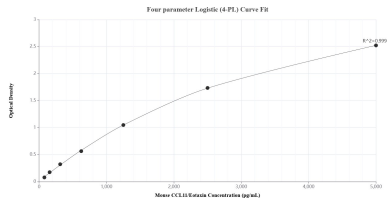
For technical support and original validation data for this product please contact:

T: 1 (888) 4PTGLAB (1-888-478-4522) (toll free  
in USA), or 1(312) 455-8498 (outside USA)

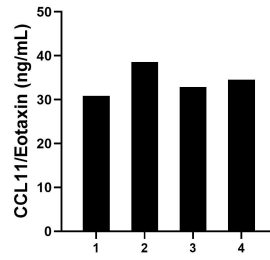
E: [proteintech@ptglab.com](mailto:proteintech@ptglab.com)  
W: [ptglab.com](http://ptglab.com)

**This product is exclusively available under Proteintech Group brand and is not available to purchase from any other manufacturer.**

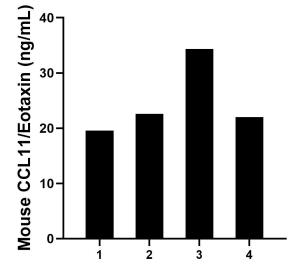
## Selected Validation Data



Sandwich ELISA standard curve of MP02367-1, Mouse CCL11/Eotaxin Recombinant Matched Antibody Pair - PBS only. 86339-2-PBS was coated to a plate as the capture antibody and incubated with serial dilutions of standard Eg2400. 86339-1-PBS was HRP conjugated as the detection antibody. Range: 78.1-5000 pg/mL



Serum of four rats was measured. The CCL11/Eotaxin concentration of detected samples was determined to be 34.2 pg/mL with a range of 30.9-38.6 pg/mL.



Serum of four mice was measured. The CCL11/Eotaxin concentration of detected samples was determined to be 24.6 pg/mL with a range of 19.6-34.3 pg/mL.