

For Research Use Only

# ATP6V1C1 Recombinant antibody, PBS Only (Capture)

Catalog Number: 86345-2-PBS



## Basic Information

<b>Catalog Number:</b> 86345-2-PBS	<b>GenBank Accession Number:</b> BC010960	<b>Purification Method:</b> Protein A purification
<b>Size:</b> 100ug , Concentration: 1 mg/ml by Nanodrop;	<b>GeneID (NCBI):</b> 528	<b>CloneNo.:</b> 250958C3
<b>Source:</b> Rabbit	<b>UNIPROT ID:</b> P21283	
<b>Isotype:</b> IgG	<b>Full Name:</b> ATPase, H <sup>+</sup> transporting, lysosomal 42kDa, V1 subunit C1	
<b>Immunogen Catalog Number:</b> AG9020	<b>Calculated MW:</b> 382 aa, 44 kDa	

## Applications

**Tested Applications:**  
Cytometric bead array, Indirect ELISA, Sample test

**Species Specificity:**  
human

## Product Information

86345-2-PBS targets ATP6V1C1 as part of a matched antibody pair:

MP02350-1: 86345-2-PBS capture and 86345-1-PBS detection (validated in Cytometric bead array)

Unconjugated rabbit recombinant monoclonal antibody in PBS only (BSA and azide free) storage buffer at a concentration of 1 mg/mL, ready for conjugation. Created using Proteintech's proprietary in-house recombinant technology. Recombinant production enables unrivalled batch-to-batch consistency, easy scale-up, and future security of supply.

This conjugation ready format makes antibodies ideal for use in many applications including: ELISAs, multiplex assays requiring matched pairs, mass cytometry, and multiplex imaging applications. Antibody use should be optimized by the end user for each application and assay.

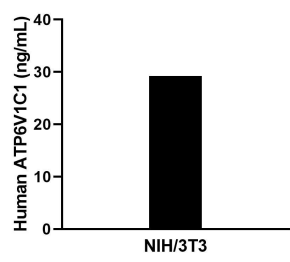
## Storage

**Storage:**  
Store at -80°C.  
**Storage Buffer:**  
PBS only, pH7.3

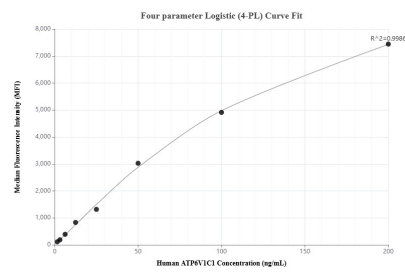
For technical support and original validation data for this product please contact:  
T: 1 (888) 4PTGLAB (1-888-478-4522) (toll free in USA), or 1(312) 455-8498 (outside USA)  
E: [proteintech@ptglab.com](mailto:proteintech@ptglab.com)  
W: [ptglab.com](http://ptglab.com)

This product is exclusively available under Proteintech Group brand and is not available to purchase from any other manufacturer.

Selected Validation Data



The mean ATP6V1C1 concentration was determined to be 29.6 ng/mL in NIH/3T3 cell extract based on a 1.4 mg/mL extract load.



Cytometric bead array standard curve of MP02350-1, ATP6V1C1 Recombinant Matched Antibody Pair, PBS Only. Capture antibody: 86345-2-PBS. Detection antibody: 86345-1-PBS. Standard: Ag9020. Range: 1.562-200 ng/mL.