

For Research Use Only

ATP6V1C1 Recombinant antibody

Catalog Number: 86345-2-RR



Basic Information

Catalog Number: 86345-2-RR	GenBank Accession Number: BC010960	Purification Method: Protein A purification
Size: 100ul , Concentration: 1000 µg/ml by Nanodrop;	GeneID (NCBI): 528	CloneNo.: 250958C3
Source: Rabbit	UNIPROT ID: P21283	Recommended Dilutions: WB: 1:2000-1:10000
Isotype: IgG	Full Name: ATPase, H ⁺ transporting, lysosomal 42kDa, V1 subunit C1	
Immunogen Catalog Number: AG9020	Calculated MW: 382 aa, 44 kDa	
	Observed MW: 42-44 kDa	

Applications

Tested Applications: WB, ELISA	Positive Controls: WB : HeLa cells, U-251 cells, NIH/3T3 cells, mouse brain tissue, fetal human brain tissue, human testis tissue
Species Specificity: human, mouse, rat	

Background Information

The vacuolar H⁺-ATPase (V-ATPase) is a functionally conserved multimeric complex localized at the membranes of many organelles where its proton-pumping action is required for proper lumen acidification (PMID: 39210597). ATP6V1C1, also known as ATPase, H⁺ transporting, lysosomal V1 subunit C1, is a component of the V1 sector of the V-ATPase complex. ATP6v1c1 knockdown significantly reduces tumor stimulated bone resorption through osteoclastogenesis at the bone and metastasis in vivo, as well as V-ATPase activity, proliferation, and mTORC1 activation in vitro (PMID: 28504970). Also, ATP6V1C1, associated with the tumor microenvironment and mTORC1 signaling pathway, is a potential diagnostic, prognostic, and therapeutic biomarker for hepatocellular carcinoma (PMID: 39557733).

Storage

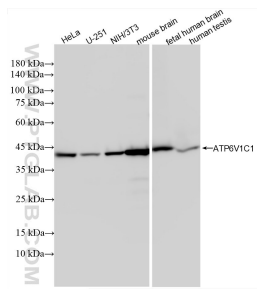
Storage:
Store at -20°C. Stable for one year after shipment.
Storage Buffer:
PBS with 0.02% sodium azide and 50% glycerol, pH7.3
Aliquoting is unnecessary for -20°C storage

*** 20ul sizes contain 0.1% BSA

For technical support and original validation data for this product please contact:
T: 1 (888) 4PTGLAB (1-888-478-4522) (toll free in USA), or 1(312) 455-8498 (outside USA)
E: proteintech@ptglab.com
W: ptglab.com

This product is exclusively available under Proteintech Group brand and is not available to purchase from any other manufacturer.

Selected Validation Data



Various lysates were subjected to SDS PAGE followed by western blot with 86345-2-RR (ATP6V1C1 antibody) at dilution of 1:5000 incubated at room temperature for 1.5 hours.