

For Research Use Only

IMPDH2 Recombinant antibody, PBS Only

Catalog Number: 86346-3-PBS



Basic Information

Catalog Number: 86346-3-PBS	GenBank Accession Number: BC012840	Purification Method: Protein A purification
Size: 100ug , Concentration: 1 mg/ml by Nanodrop;	GeneID (NCBI): 3615	CloneNo.: 251066H6
Source: Rabbit	UNIPROT ID: P12268	
Isotype: IgG	Full Name: IMP (inosine monophosphate) dehydrogenase 2	
Immunogen Catalog Number: AG3632	Calculated MW: 514 aa, 56 kDa	
	Observed MW: 56 kDa	

Applications

Tested Applications:
WB, Indirect ELISA

Species Specificity:
human, mouse, rat

Background Information

IMPDH2, also named as IMPD2, belongs to the IMPDH/GMPR family. It is a rate limiting enzyme in the de novo synthesis of guanine nucleotides and therefore is involved in the regulation of cell growth. It may also have a role in the development of malignancy and the growth progression of some tumors. IMPDH2 is a key enzyme in the purine nucleotide biosynthetic pathway and constitutes a pivotal biological target for immunosuppressant and antiviral drugs. (PMID:21181270)

Storage

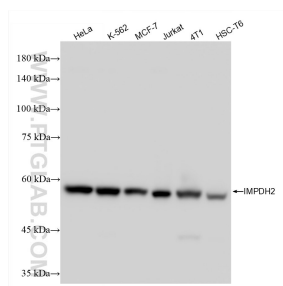
Storage:
Store at -80°C.

Storage Buffer:
PBS only, pH7.3

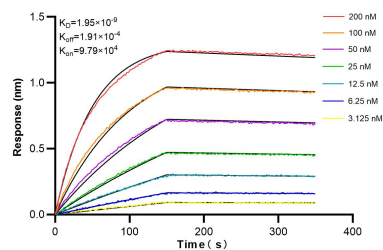
For technical support and original validation data for this product please contact:
T: 1 (888) 4PTGLAB (1-888-478-4522) (toll free in USA), or 1(312) 455-8498 (outside USA)
E: proteintech@ptglab.com
W: ptglab.com

This product is exclusively available under Proteintech Group brand and is not available to purchase from any other manufacturer.

Selected Validation Data



Various lysates were subjected to SDS PAGE followed by western blot with 86346-3-RR (IMPDH2 antibody) at dilution of 1:10000 incubated at room temperature for 1.5 hours. This data was developed using the same antibody clone with 86346-3-PBS in a different storage buffer formulation.



Biolayer interferometry (BLI) kinetic assays of 86346-3-RR against Human IMPDH2 were performed. The affinity constant is 1.95 nM.