

For Research Use Only

# IMPDH2 Recombinant antibody

Catalog Number: 86346-3-RR



## Basic Information

<b>Catalog Number:</b> 86346-3-RR	<b>GenBank Accession Number:</b> BC012840	<b>Purification Method:</b> Protein A purification
<b>Size:</b> 100ul , Concentration: 1000 µg/ml by Nanodrop;	<b>GeneID (NCBI):</b> 3615	<b>CloneNo.:</b> 251066H6
<b>Source:</b> Rabbit	<b>UNIPROT ID:</b> P12268	<b>Recommended Dilutions:</b> WB: 1:5000-1:50000
<b>Isotype:</b> IgG	<b>Full Name:</b> IMP (inosine monophosphate) dehydrogenase 2	
<b>Immunogen Catalog Number:</b> AG3632	<b>Calculated MW:</b> 514 aa, 56 kDa	
	<b>Observed MW:</b> 56 kDa	

## Applications

<b>Tested Applications:</b> WB, ELISA	<b>Positive Controls:</b>
<b>Species Specificity:</b> human, mouse, rat	<b>WB :</b> HeLa cells, K-562 cells, MCF-7 cells, Jurkat cells, HSC-T6 cells, 4T1 cells

## Background Information

IMPDH2, also named as IMPD2, belongs to the IMPDH/GMPR family. It is a rate limiting enzyme in the de novo synthesis of guanine nucleotides and therefore is involved in the regulation of cell growth. It may also have a role in the development of malignancy and the growth progression of some tumors. IMPDH2 is a key enzyme in the purine nucleotide biosynthetic pathway and constitutes a pivotal biological target for immunosuppressant and antiviral drugs. (PMID:21181270)

## Storage

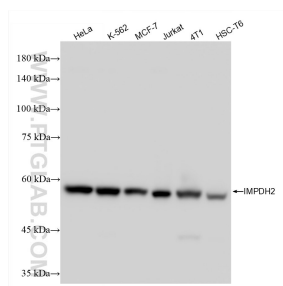
**Storage:**  
Store at -20°C. Stable for one year after shipment.  
**Storage Buffer:**  
PBS with 0.02% sodium azide and 50% glycerol, pH7.3  
**Aliquoting is unnecessary for -20°C storage**

\*\*\* 20ul sizes contain 0.1% BSA

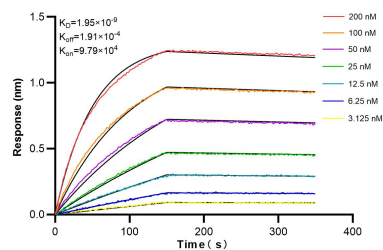
For technical support and original validation data for this product please contact:  
T: 1 (888) 4PTGLAB (1-888-478-4522) (toll free in USA), or 1(312) 455-8498 (outside USA)  
E: [proteintech@ptglab.com](mailto:proteintech@ptglab.com)  
W: [ptglab.com](http://ptglab.com)

This product is exclusively available under Proteintech Group brand and is not available to purchase from any other manufacturer.

## Selected Validation Data



Various lysates were subjected to SDS PAGE followed by western blot with 86346-3-RR (IMPDH2 antibody) at dilution of 1:10000 incubated at room temperature for 1.5 hours.



Biolayer interferometry (BLI) kinetic assays of 86346-3-RR against Human IMPDH2 were performed. The affinity constant is 1.95 nM.