

RPL17 Recombinant monoclonal antibody

Catalog Number: 86348-3-RR

Basic Information

Catalog Number: 86348-3-RR	GenBank Accession Number: BC066323	Purification Method: Protein A purification
Size: 100ul , Concentration: 1000 µg/ml by Nanodrop;	GeneID (NCBI): 6139	CloneNo.: 250901B1
Source: Rabbit	UNIPROT ID: P18621	Recommended Dilutions: WB: 1:5000-1:50000 IF/ICC: 1:50-1:500
Isotype: IgG	Full Name: ribosomal protein L17	
Immunogen Catalog Number: AG5270	Calculated MW: 21 kDa	
	Observed MW: 23 kDa	

Applications

Tested Applications: WB, ELISA	Positive Controls:
Species Specificity: human, mouse	WB : HeLa cells, HEK-293 cells, Jurkat cells, NIH-3T3 cells, mouse pancreas tissue, rat pancreas tissue
	IF/ICC : Jurkat cells,

Background Information

Ribosomes, the organelles that catalyze protein synthesis, consist of a small 40S subunit and a large 60S subunit. Together these subunits are composed of 4 RNA species and approximately 80 structurally distinct proteins. RPL17 gene encodes a ribosomal protein that is a component of the 60S subunit belonging to the L22P family of ribosomal proteins. It is located in the cytoplasm. This gene has been referred to as rpl23 because the encoded protein shares amino acid identity with ribosomal protein L23 from Halobacterium marismortui; however, its official symbol is RPL17.

Storage

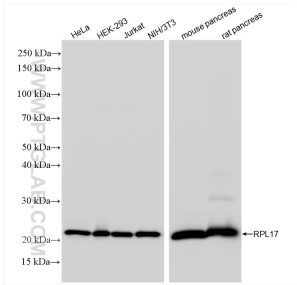
Storage:
Store at -20°C. Stable for one year after shipment.
Storage Buffer:
PBS with 0.02% sodium azide and 50% glycerol, pH7.3
Aliquoting is unnecessary for -20°C storage

*** 20ul sizes contain 0.1% BSA

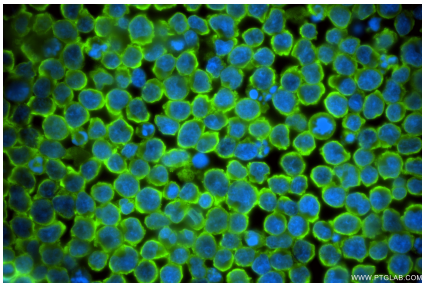
For technical support and original validation data for this product please contact:
T: 1 (888) 4PTGLAB (1-888-478-4522) (toll free in USA), or 1(312) 455-8498 (outside USA)
E: proteintech@ptglab.com
W: ptglab.com

This product is exclusively available under Proteintech Group brand and is not available to purchase from any other manufacturer.

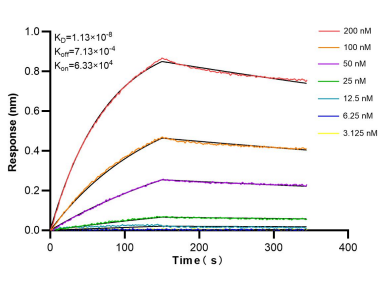
Selected Validation Data



Various lysates were subjected to SDS PAGE followed by western blot with 86348-3-RR (RPL17 antibody) at dilution of 1:10000 incubated at room temperature for 1.5 hours.



Immunofluorescent analysis of (4% PFA) fixed Jurkat cells using RPL17 antibody (86348-3-RR, Clone: 250901B1) at dilution of 1:200 and CoraLite® 488-Conjugated Goat Anti-Rabbit IgG(H+L) (SA00013-2).



Biolayer interferometry (BLI) kinetic assays of 86348-3-RR against Human RPL17 were performed. The affinity constant is 11.3 nM.