

For Research Use Only

ARMET Recombinant antibody, PBS Only (Capture)

Catalog Number: 86360-2-PBS



Basic Information

Catalog Number: 86360-2-PBS	GenBank Accession Number: BC007282	Purification Method: Protein A purification
Size: 100ug , Concentration: 1 mg/ml by Nanodrop;	GeneID (NCBI): 7873	CloneNo.: 250463C1
Source: Rabbit	UNIPROT ID: P55145	
Isotype: IgG	Full Name: arginine-rich, mutated in early stage tumors	
Immunogen Catalog Number: AG1115	Calculated MW: 22 kDa	
	Observed MW: 13-20 kDa	

Applications

Tested Applications:
WB, Cytometric bead array, Indirect ELISA, Sample test

Species Specificity:
human, mouse, rat

Product Information

86360-2-PBS targets ARMET as part of a matched antibody pair.

MP02377-1: 86360-2-PBS capture and 86360-1-PBS detection (validated in Cytometric bead array)

Unconjugated rabbit recombinant monoclonal antibody in PBS only (BSA and azide free) storage buffer at a concentration of 1 mg/mL, ready for conjugation. Created using Proteintech's proprietary in-house recombinant technology. Recombinant production enables unrivalled batch-to-batch consistency, easy scale-up, and future security of supply.

This conjugation ready format makes antibodies ideal for use in many applications including: ELISAs, multiplex assays requiring matched pairs, mass cytometry, and multiplex imaging applications. Antibody use should be optimized by the end user for each application and assay.

Storage

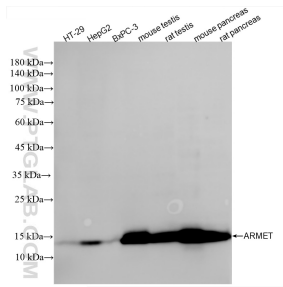
Storage:
Store at -80°C.

Storage Buffer:
PBS only, pH7.3

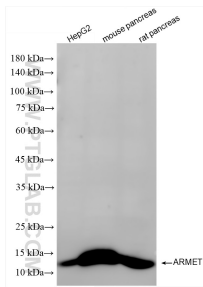
For technical support and original validation data for this product please contact:
T: 1 (888) 4PTGLAB (1-888-478-4522) (toll free in USA), or 1(312) 455-8498 (outside USA)
E: proteintech@ptglab.com
W: ptglab.com

This product is exclusively available under Proteintech Group brand and is not available to purchase from any other manufacturer.

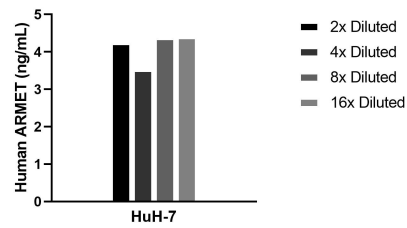
Selected Validation Data



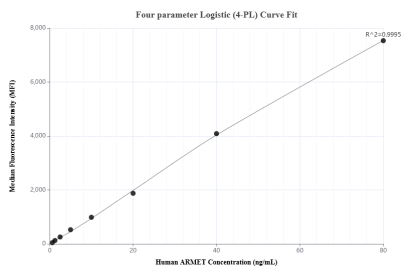
Various lysates were subjected to SDS PAGE followed by western blot with 86360-2-RR (ARMET antibody) at dilution of 1:10000 incubated at room temperature for 1.5 hours. This data was developed using the same antibody clone with 86360-2-PBS in a different storage buffer formulation.



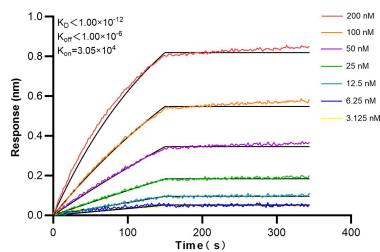
Various lysates were subjected to SDS PAGE followed by western blot with 86360-2-RR (ARMET antibody) at dilution of 1:10000 incubated at room temperature for 1.5 hours. This data was developed using the same antibody clone with 86360-2-PBS in a different storage buffer formulation.



The mean ARMET concentration was determined to be 4.1 ng/mL in HuH-7 cell extract based on a 1.4 mg/mL extract load.



Cytometric bead array standard curve of MP02377-1, ARMET Recombinant Matched Antibody Pair, PBS Only. Capture antibody: 86360-2-PBS. Detection antibody: 86360-1-PBS. Standard: Ag1115. Range: 0.625-80 ng/mL



Biolayer interferometry (BLI) kinetic assays of 86360-2-RR against Human ARMET were performed. The affinity constant is below 1 pM.