

For Research Use Only

HLTF Recombinant monoclonal antibody, PBS Only

Catalog Number: 86362-2-PBS



Basic Information

Catalog Number: 86362-2-PBS	GenBank Accession Number: BC044659	Purification Method: Protein A purification
Size: 100ug , Concentration: 1 mg/ml by Nanodrop;	GeneID (NCBI): 6596	CloneNo.: 251000A4
Source: Rabbit	UNIPROT ID: Q14527	
Isotype: IgG	Full Name: helicase-like transcription factor	
Immunogen Catalog Number: AG5596	Calculated MW: 114 kDa	
	Observed MW: 114 kDa	

Applications

Tested Applications:
WB, Indirect ELISA

Species Specificity:
human, mouse, monkey

Background Information

Helicase-like Transcription Factor (HLTF) is a crucial nuclear protein and member of the SWI/SNF family of chromatin-remodeling complexes, playing a dual role in transcription regulation and DNA damage repair. It functions dually as a regulator of gene expression, utilizing its ATP-dependent helicase activity to modify chromatin structure and facilitate transcription, and as a central effector in the DNA damage response pathway. HLTF is particularly crucial for promoting error-free DNA repair at stalled replication forks via a mechanism called template switching, which prevents the accumulation of mutagenic lesions. HLTF can be detected as 114 kDa.

Storage

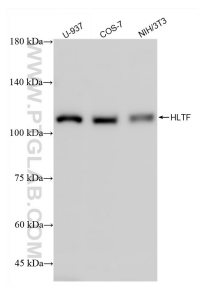
Storage:
Store at -80°C.

Storage Buffer:
PBS only, pH7.3

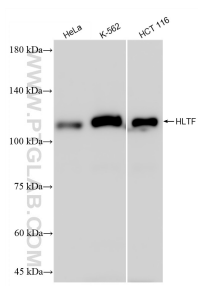
For technical support and original validation data for this product please contact:
T: 1 (888) 4PTGLAB (1-888-478-4522) (toll free in USA), or 1(312) 455-8498 (outside USA)
E: proteintech@ptglab.com
W: ptglab.com

This product is exclusively available under Proteintech Group brand and is not available to purchase from any other manufacturer.

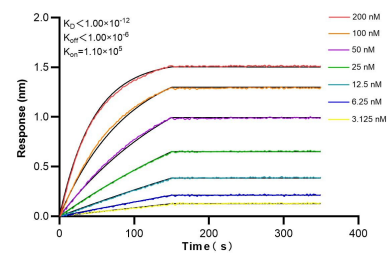
Selected Validation Data



Various lysates were subjected to SDS PAGE followed by western blot with 86362-2-RR (HLTf antibody) at dilution of 1:10000 incubated at room temperature for 1.5 hours. This data was developed using the same antibody clone with 86362-2-PBS in a different storage buffer formulation.



Various lysates were subjected to SDS PAGE followed by western blot with 86362-2-RR (HLTf antibody) at dilution of 1:10000 incubated at room temperature for 1.5 hours. This data was developed using the same antibody clone with 86362-2-PBS in a different storage buffer formulation.



Biolayer interferometry (BLI) kinetic assays of 86362-2-RR against Human HLTf were performed. The affinity constant is below 1 pM.