

For Research Use Only

HLTF Recombinant monoclonal antibody

Catalog Number: 86362-2-RR



Basic Information

Catalog Number: 86362-2-RR	GenBank Accession Number: BC044659	Purification Method: Protein A purification
Size: 100ul , Concentration: 1000 µg/ml by Nanodrop;	GeneID (NCBI): 6596	CloneNo.: 251000A4
Source: Rabbit	UNIPROT ID: Q14527	Recommended Dilutions: WB: 1:5000-1:50000
Isotype: IgG	Full Name: helicase-like transcription factor	
Immunogen Catalog Number: AG5596	Calculated MW: 114 kDa	
	Observed MW: 114 kDa	

Applications

Tested Applications: WB, ELISA	Positive Controls: WB : U-937 cells, HeLa cells, K-562 cells, HCT 116 cells, COS-7 cells, NIH//3T3 cells
Species Specificity: human, mouse, monkey	

Background Information

Helicase-like Transcription Factor (HLTF) is a crucial nuclear protein and member of the SWI/SNF family of chromatin-remodeling complexes, playing a dual role in transcription regulation and DNA damage repair. It functions dually as a regulator of gene expression, utilizing its ATP-dependent helicase activity to modify chromatin structure and facilitate transcription, and as a central effector in the DNA damage response pathway. HLTF is particularly crucial for promoting error-free DNA repair at stalled replication forks via a mechanism called template switching, which prevents the accumulation of mutagenic lesions. HLTF can be detected as 114 kDa.

Storage

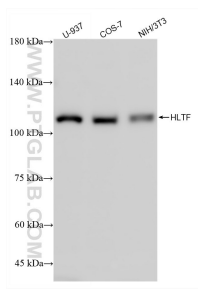
Storage:
Store at -20°C. Stable for one year after shipment.
Storage Buffer:
PBS with 0.02% sodium azide and 50% glycerol, pH7.3
Aliquoting is unnecessary for -20°C storage

*** 20ul sizes contain 0.1% BSA

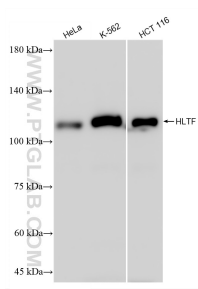
For technical support and original validation data for this product please contact:
T: 1 (888) 4PTGLAB (1-888-478-4522) (toll free in USA), or 1(312) 455-8498 (outside USA)
E: proteintech@ptglab.com
W: ptglab.com

This product is exclusively available under Proteintech Group brand and is not available to purchase from any other manufacturer.

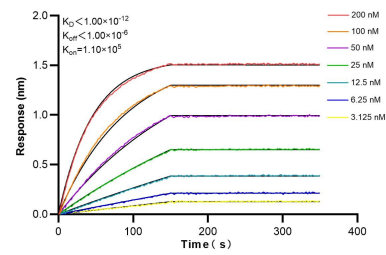
Selected Validation Data



Various lysates were subjected to SDS PAGE followed by western blot with 86362-2-RR (HLTF antibody) at dilution of 1:10000 incubated at room temperature for 1.5 hours.



Various lysates were subjected to SDS PAGE followed by western blot with 86362-2-RR (HLTF antibody) at dilution of 1:10000 incubated at room temperature for 1.5 hours.



Biolayer interferometry (BLI) kinetic assays of 86362-2-RR against Human HLTF were performed. The affinity constant is below 1 pM.