

For Research Use Only

GALM Recombinant monoclonal antibody

Catalog Number: 86369-1-RR



Basic Information

Catalog Number: 86369-1-RR	GenBank Accession Number: BC019263	Purification Method: Protein A purification
Size: 100ul , Concentration: 1000 µg/ml by Nanodrop;	GeneID (NCBI): 130589	CloneNo.: 251049A8
Source: Rabbit	UNIPROT ID: Q96C23	Recommended Dilutions: WB: 1:2000-1:10000
Isotype: IgG	Full Name: galactose mutarotase (aldose 1-epimerase)	
Immunogen Catalog Number: AG8842	Calculated MW: 342 aa, 38 kDa	
	Observed MW: 38 kDa	

Applications

Tested Applications: WB, ELISA	Positive Controls:
Species Specificity: human, mouse, rat	WB : HeLa cells, HepG2 cells, SK-N-SH cells, SH-SY5Y cells, mouse kidney tissue, rat kidney tissue

Background Information

GALM, also named as Aldose 1-epimerase, belongs to the aldose epimerase family. GALM is a mutarotase that catalyzes the interconversion of beta-D-galactose and alpha-D-galactose during galactose metabolism. GALM is involved in the maintenance of the equilibrium between the beta- and alpha-anomers of galactose, therefore ensuring a sufficient supply of the alpha-anomer for GALK1. GALM is also active on D-glucose, but its preference for galactose is higher than that of glucose. The calculated molecular weight of GALM is 38 kDa.

Storage

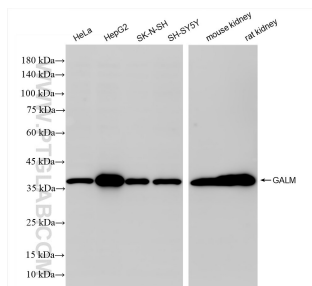
Storage:
Store at -20°C. Stable for one year after shipment.
Storage Buffer:
PBS with 0.02% sodium azide and 50% glycerol, pH7.3
Aliquoting is unnecessary for -20°C storage

*** 20ul sizes contain 0.1% BSA

For technical support and original validation data for this product please contact:
T: 1 (888) 4PTGLAB (1-888-478-4522) (toll free in USA), or 1(312) 455-8498 (outside USA)
E: proteintech@ptglab.com
W: ptglab.com

This product is exclusively available under Proteintech Group brand and is not available to purchase from any other manufacturer.

Selected Validation Data



Various lysates were subjected to SDS PAGE followed by western blot with 86369-1-RR (GALM antibody) at dilution of 1:5000 incubated at room temperature for 1.5 hours.