

For Research Use Only

Pan-Keratin (TypeII) Recombinant antibody

Catalog Number: 86370-1-RR



Basic Information

Catalog Number: 86370-1-RR	GenBank Accession Number: GeneID (NCBI): Pan-Keratin (TypeII)	Purification Method: Protein A purification
Size: 100ul , Concentration: 1000 µg/ml by Nanodrop;	UNIPROT ID: Q14533	CloneNo.: 251040F7
Source: Rabbit	Full Name: Observed MW:	Recommended Dilutions: WB: 1:5000-1:50000 IHC: 1:500-1:2000 IF-P: 1:250-1:1000
Isotype: IgG	52-68 kDa	

Applications

Tested Applications:

WB, IHC, IF-P, ELISA

Species Specificity:

human, mouse, rat

Note-IHC: suggested antigen retrieval with TE buffer pH 9.0; (*) Alternatively, antigen retrieval may be performed with citrate buffer pH 6.0

Positive Controls:

WB : HeLa cells, A431 cells, HT-29 cells, mouse skin tissue, rat colon tissue, rat skin tissue

IHC : human stomach cancer tissue, human breast cancer tissue

IF-P : human colon cancer tissue, human cervical cancer tissue, human lung cancer tissue

Background Information

Keratin is a family of fibrous structural proteins that are key components in hair, nails, feathers, hooves, and the outer layer of skin (epidermis). There are two main types of keratin: Type I (acidic) and Type II (basic/neutral), which form heterodimers to create intermediate filaments, providing mechanical strength to cells. Type II keratins (or Type II cytokeratins) are basic or neutral proteins that form part of the intermediate filament cytoskeleton in epithelial cells. Type II keratins include K1-K8, and K71-K86.

Storage

Storage:

Store at -20°C. Stable for one year after shipment.

Storage Buffer:

PBS with 0.02% sodium azide and 50% glycerol, pH7.3

Aliquoting is unnecessary for -20°C storage

*** 20ul sizes contain 0.1% BSA

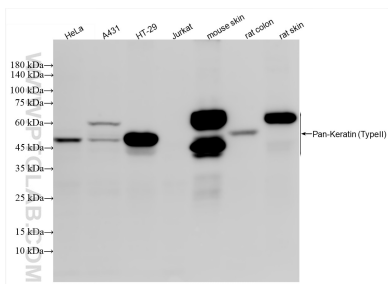
For technical support and original validation data for this product please contact:

T: 1 (888) 4PTGLAB (1-888-478-4522) (toll free in USA), or 1(312) 455-8498 (outside USA)

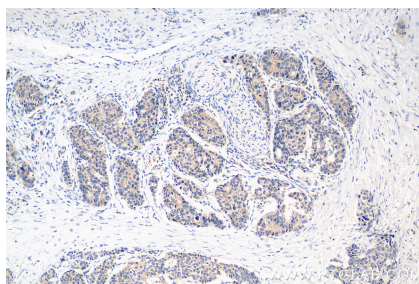
E: proteintech@ptglab.com
W: ptglab.com

This product is exclusively available under Proteintech Group brand and is not available to purchase from any other manufacturer.

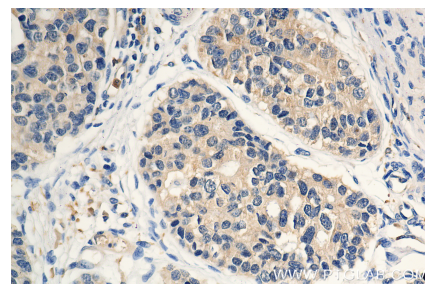
Selected Validation Data



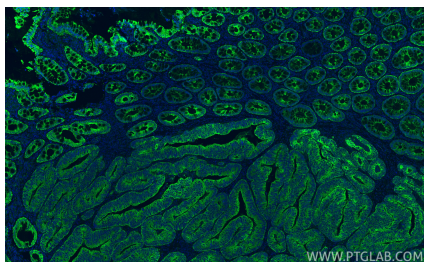
Various lysates were subjected to SDS PAGE followed by western blot with 86370-1-RR (Pan-Keratin (TypeII) antibody) at dilution of 1:10000 incubated at room temperature for 1.5 hours.



Immunohistochemical analysis of paraffin-embedded human stomach cancer tissue slide using 86370-1-RR (Pan-Keratin (TypeII) antibody) at dilution of 1:1000 (under 10x lens). Heat mediated antigen retrieval with Tris-EDTA buffer (pH 9.0).



Immunohistochemical analysis of paraffin-embedded human stomach cancer tissue slide using 86370-1-RR (Pan-Keratin (TypeII) antibody) at dilution of 1:1000 (under 40x lens). Heat mediated antigen retrieval with Tris-EDTA buffer (pH 9.0).



Immunofluorescent analysis of (4% PFA) fixed paraffin-embedded human colon cancer tissue using Pan-Keratin (TypeII) antibody (86370-1-RR, Clone: 251040F7) at dilution of 1:500 and CoraLite®488-Conjugated Goat Anti-Rabbit IgG(H+L) (SA00013-2). Heat mediated antigen retrieval with Tris-EDTA buffer (pH 9.0).