

For Research Use Only

# G-CSF Recombinant monoclonal antibody

Catalog Number: 86376-1-RR



## Basic Information

<b>Catalog Number:</b> 86376-1-RR	<b>GenBank Accession Number:</b> GeneID (NCBI): 1440	<b>Purification Method:</b> Protein A purification
<b>Size:</b> 100ul , Concentration: 1000 µg/ml by Nanodrop;	<b>UNIPROT ID:</b> P09919	<b>CloneNo.:</b> 250389H1
<b>Source:</b> Rabbit	<b>Full Name:</b> colony stimulating factor 3 (granulocyte)	<b>Recommended Dilutions:</b> WB: 1:1000-1:4000 IF/ICC: 1:50-1:500 FC (Intra): 0.25 ug per 10 <sup>6</sup> cells in a 100 µl suspension
<b>Isotype:</b> IgG	<b>Observed MW:</b> 20 kDa	
<b>Immunogen Catalog Number:</b> HZ-1207		

## Applications

<b>Tested Applications:</b> WB, IF/ICC, FC (Intra), ELISA	<b>Positive Controls:</b>
<b>Species Specificity:</b> human	<b>WB :</b> HeLa cells, HepG2 cells, K-562 cells, MCF-7 cells, MOLT-4 cells, A549 cells
	<b>IF/ICC :</b> K-562 cells,
	<b>FC (Intra) :</b> K-562 cells,

## Background Information

Granulocyte colony-stimulating factor (G-CSF), also referred to as CSF3, is a protective cytokine with anti-inflammatory effects. G-CSF is important in promoting survival of the granulocytic lineage cells and proliferation and migration of neutrophils as well as trophoblast cells. G-CSF acts by binding to its receptor G-CSFR (also called CSF3R), which after binding with G-CSF activates the canonical Janus kinase (Jak)/signal transducer, activator of transcription (STAT) and Ras/Raf/MAP kinase pathways. G-CSF potently stimulates the proliferation and release of peripheral blood progenitor cells into the bloodstream and is therefore used to treat neutropenia after chemotherapy. Furthermore, G-CSF levels are elevated upon intensive exercise leading to increased neutrophil counts, which are predominantly due to delayed neutrophil apoptosis.

## Storage

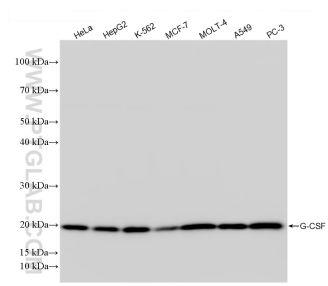
**Storage:**  
Store at -20°C. Stable for one year after shipment.  
**Storage Buffer:**  
PBS with 0.02% sodium azide and 50% glycerol, pH7.3  
**Aliquoting is unnecessary for -20°C storage**

\*\*\* 20ul sizes contain 0.1% BSA

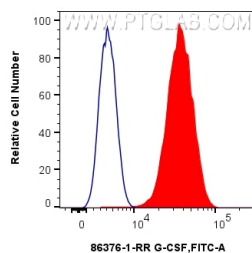
For technical support and original validation data for this product please contact:  
T: 1 (888) 4PTGLAB (1-888-478-4522) (toll free in USA), or 1(312) 455-8498 (outside USA)  
E: [proteintech@ptglab.com](mailto:proteintech@ptglab.com)  
W: [ptglab.com](http://ptglab.com)

This product is exclusively available under Proteintech Group brand and is not available to purchase from any other manufacturer.

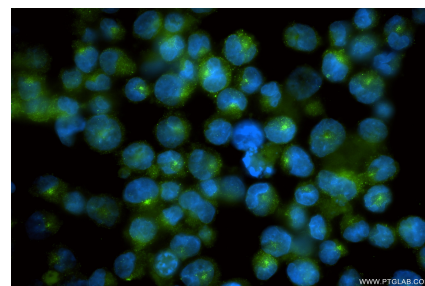
## Selected Validation Data



Various lysates were subjected to SDS PAGE followed by western blot with 86376-1-RR (G-CSF antibody) at dilution of 1:2000 incubated at room temperature for 1.5 hours.



$1 \times 10^6$  K-562 cells were intracellularly stained with 0.25  $\mu$ g G-CSF Recombinant antibody (86376-1-RR, Clone: 250389H1) and CoraLite® 488-Conjugated Goat Anti-Rabbit IgG(H+L) (SA00013-2) (red), or 0.25  $\mu$ g Rabbit IgG Isotype Control RecAb (98136-1-RR, Clone: 240953C9) (blue). Cells were fixed with 4% PFA and permeabilized with Flow Cytometry Perm Buffer.



Immunofluorescent analysis of (4% PFA) fixed K-562 cells using G-CSF antibody (86376-1-RR, Clone: 250389H1) at dilution of 1:200 and CoraLite® 488-Conjugated Goat Anti-Rabbit IgG(H+L) (SA00013-2).