

For Research Use Only

GLDC Recombinant antibody

Catalog Number: 86378-1-RR



Basic Information

Catalog Number:

86378-1-RR

Size:

100ul , Concentration: 1000 µg/ml by Nanodrop;

Source:

Rabbit

Isotype:

IgG

Immunogen Catalog Number:

AG20410

GenBank Accession Number:

BC111995

GeneID (NCBI):

2731

UNIPROT ID:

P23378

Full Name:

glycine dehydrogenase (decarboxylating)

Calculated MW:

1020 aa, 113 kDa

Observed MW:

113 kDa

Purification Method:

Protein A purification

CloneNo.:

250916A5

Recommended Dilutions:

WB: 1:5000-1:50000

Applications

Tested Applications:

WB, ELISA

Species Specificity:

human, mouse, rat, monkey

Positive Controls:

WB : HepG2 cells, Vero cells, mouse liver tissue, rat liver tissue

Background Information

GLDC(Glycine dehydrogenase [decarboxylating], mitochondrial) is also named as GCSP and belongs to the GcvP family. It induces dramatic changes in glycolysis and glycine/serine metabolism that leads to changes in pyrimidine metabolism to regulate cancer cell proliferation(PMID:2225612).

Storage

Storage:

Store at -20°C. Stable for one year after shipment.

Storage Buffer:

PBS with 0.02% sodium azide and 50% glycerol, pH7.3

Aliquoting is unnecessary for -20°C storage

*** 20ul sizes contain 0.1% BSA

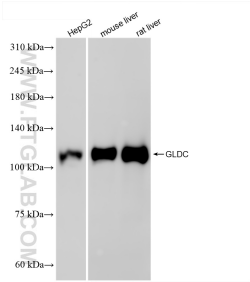
For technical support and original validation data for this product please contact:

T: 1 (888) 4PTGLAB (1-888-478-4522) (toll free in USA), or 1(312) 455-8498 (outside USA)

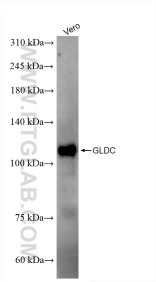
E: proteintech@ptglab.com
W: ptglab.com

This product is exclusively available under Proteintech Group brand and is not available to purchase from any other manufacturer.

Selected Validation Data



Various lysates were subjected to SDS PAGE followed by western blot with 86378-1-RR (GLDC antibody) at dilution of 1:10000 incubated at room temperature for 1.5 hours.



Vero cells were subjected to SDS PAGE followed by western blot with 86378-1-RR (GLDC antibody) at dilution of 1:10000 incubated at room temperature for 1.5 hours.