

For Research Use Only

CDCA2 Recombinant monoclonal antibody, PBS Only

Catalog Number: 86379-1-PBS



Basic Information

Catalog Number: 86379-1-PBS	GenBank Accession Number: BC036214	Purification Method: Protein A purification
Size: 100ug , Concentration: 1 mg/ml by Nanodrop;	GeneID (NCBI): 157313	CloneNo.: 250980D8
Source: Rabbit	UNIPROT ID: Q69YH5	
Isotype: IgG	Full Name: cell division cycle associated 2	
Immunogen Catalog Number: AG11967	Calculated MW: 113 kDa	
	Observed MW: 140 kDa	

Applications

Tested Applications:
WB, IHC, IF/ICC, Indirect ELISA

Species Specificity:
human

Background Information

Cell division cycle associated 2(CDCA2) is a nuclear protein that is a specific regulatory subunit for protein phosphatase 1γ (PP1γ). CDCA2 is a candidate factor involved in preparing mitotic chromatin for the transition to interphase, and controls PP1γ-dependent essential DDR regulation. CDCA2 regulates the DNA damage response(DDR) in cell cycle. In addition, CDCA2 modulates phosphorylation of major mitotic histone H3 in a PP1-dependent manner.

Storage

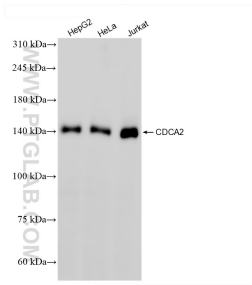
Storage:
Store at -80°C.

Storage Buffer:
PBS only, pH7.3

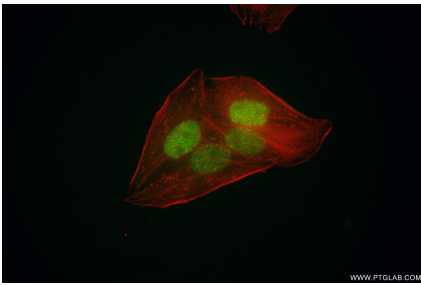
For technical support and original validation data for this product please contact:
T: 1 (888) 4PTGLAB (1-888-478-4522) (toll free in USA), or 1(312) 455-8498 (outside USA)
E: proteintech@ptglab.com
W: ptglab.com

This product is exclusively available under Proteintech Group brand and is not available to purchase from any other manufacturer.

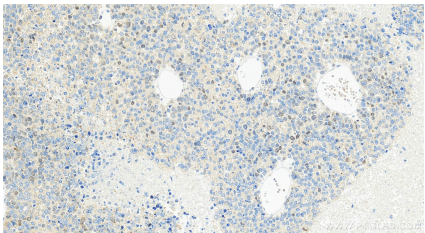
Selected Validation Data



Various lysates were subjected to SDS PAGE followed by western blot with 86379-1-RR (CDCA2 antibody) at dilution of 1:1000 incubated at room temperature for 1.5 hours. This data was developed using the same antibody clone with 86379-1-PBS in a different storage buffer formulation.



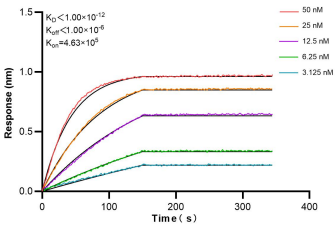
Immunofluorescent analysis of (4% PFA) fixed HepG2 cells using CDCA2 antibody (86379-1-RR, Clone: 250980D8) at dilution of 1:1000 and CoraLite® 488-Conjugated Goat Anti-Rabbit IgG(H+L) (SA00013-2), CL594-Phalloidin (red). This data was developed using the same antibody clone with 86379-1-PBS in a different storage buffer formulation.



Immunohistochemical analysis of paraffin-embedded Hepatocellular carcinoma tissue slide using 86379-1-RR (CDCA2 antibody) at dilution of 1:400 (under 20x lens). Heat mediated antigen retrieval with Tris-EDTA buffer (pH 9.0). This data was developed using the same antibody clone with 86379-1-PBS in a different storage buffer formulation.



Immunohistochemical analysis of paraffin-embedded Hepatocellular carcinoma tissue slide using 86379-1-RR (CDCA2 antibody) at dilution of 1:400 (under 20x lens). Heat mediated antigen retrieval with Tris-EDTA buffer (pH 9.0). This data was developed using the same antibody clone with 86379-1-PBS in a different storage buffer formulation.



Biolayer interferometry (BLI) kinetic assays of 86379-1-RR against Human CDCA2 were performed. The affinity constant is below 1 pM.