

# CDCA2 Recombinant monoclonal antibody

Catalog Number: 86379-1-RR

## Basic Information

<b>Catalog Number:</b> 86379-1-RR	<b>GenBank Accession Number:</b> BC036214	<b>Purification Method:</b> Protein A purification
<b>Size:</b> 100ul , Concentration: 1000 µg/ml by Nanodrop;	<b>GeneID (NCBI):</b> 157313	<b>CloneNo.:</b> 250980D8
<b>Source:</b> Rabbit	<b>UNIPROT ID:</b> Q69YH5	<b>Recommended Dilutions:</b> WB: 1:500-1:2000 IHC: 1:200-1:800 IF/ICC: 1:500-1:2000
<b>Isotype:</b> IgG	<b>Full Name:</b> cell division cycle associated 2	
<b>Immunogen Catalog Number:</b> AG11967	<b>Calculated MW:</b> 113 kDa	
	<b>Observed MW:</b> 140 kDa	

## Applications

<b>Tested Applications:</b> WB, IHC, IF/ICC, ELISA	<b>Positive Controls:</b>
<b>Species Specificity:</b> human	<b>WB :</b> HepG2 cells, HeLa cells, Jurkat cells
<b>Note-IHC:</b> suggested antigen retrieval with <b>TE buffer pH 9.0; (*) Alternatively, antigen retrieval may be performed with citrate buffer pH 6.0</b>	<b>IHC :</b> Hepatocellular carcinoma tissue,
	<b>IF/ICC :</b> HepG2 cells,

## Background Information

Cell division cycle associated 2(CDCA2) is a nuclear protein that is a specific regulatory subunit for protein phosphatase 1γ (PP1γ). CDCA2 is a candidate factor involved in preparing mitotic chromatin for the transition to interphase, and controls PP1γ-dependent essential DDR regulation. CDCA2 regulates the DNA damage response(DDR) in cell cycle. In addition, CDCA2 modulates phosphorylation of major mitotic histone H3 in a PP1-dependent manner.

## Storage

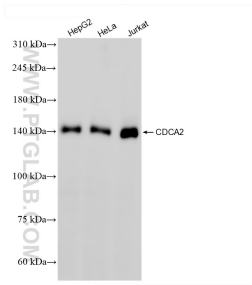
**Storage:**  
Store at -20°C. Stable for one year after shipment.  
**Storage Buffer:**  
PBS with 0.02% sodium azide and 50% glycerol, pH7.3  
**Aliquoting is unnecessary for -20°C storage**

**\*\*\* 20ul sizes contain 0.1% BSA**

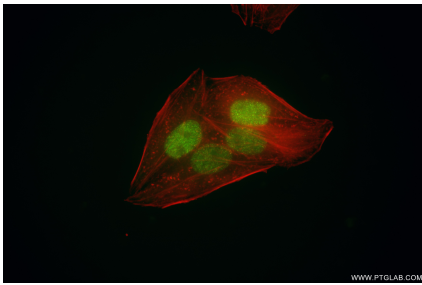
For technical support and original validation data for this product please contact:  
T: 1 (888) 4PTGLAB (1-888-478-4522) (toll free in USA), or 1(312) 455-8498 (outside USA)  
E: [proteintech@ptglab.com](mailto:proteintech@ptglab.com)  
W: [ptglab.com](http://ptglab.com)

This product is exclusively available under Proteintech Group brand and is not available to purchase from any other manufacturer.

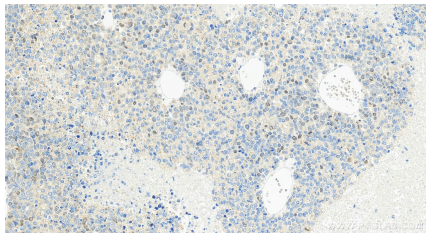
Selected Validation Data



Various lysates were subjected to SDS PAGE followed by western blot with 86379-1-RR (CDCA2 antibody) at dilution of 1:1000 incubated at room temperature for 1.5 hours.



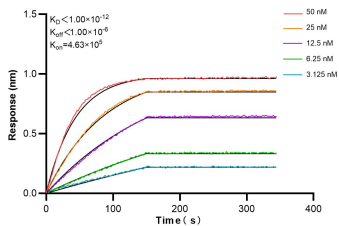
Immunofluorescent analysis of (4% PFA) fixed HepG2 cells using CDCA2 antibody (86379-1-RR, Clone: 250980D8) at dilution of 1:1000 and Coralite® 488-Conjugated Goat Anti-Rabbit IgG(H+L) (SA00013-2), CL594-Phalloidin (red).



Immunohistochemical analysis of paraffin-embedded Hepatocellular carcinoma tissue slide using 86379-1-RR (CDCA2 antibody) at dilution of 1:400 (under 20x lens). Heat mediated antigen retrieval with Tris-EDTA buffer (pH 9.0).



Immunohistochemical analysis of paraffin-embedded Hepatocellular carcinoma tissue slide using 86379-1-RR (CDCA2 antibody) at dilution of 1:400 (under 20x lens). Heat mediated antigen retrieval with Tris-EDTA buffer (pH 9.0).



Biolayer interferometry (BLI) kinetic assays of 86379-1-RR against Human CDCA2 were performed. The affinity constant is below 1 pM.